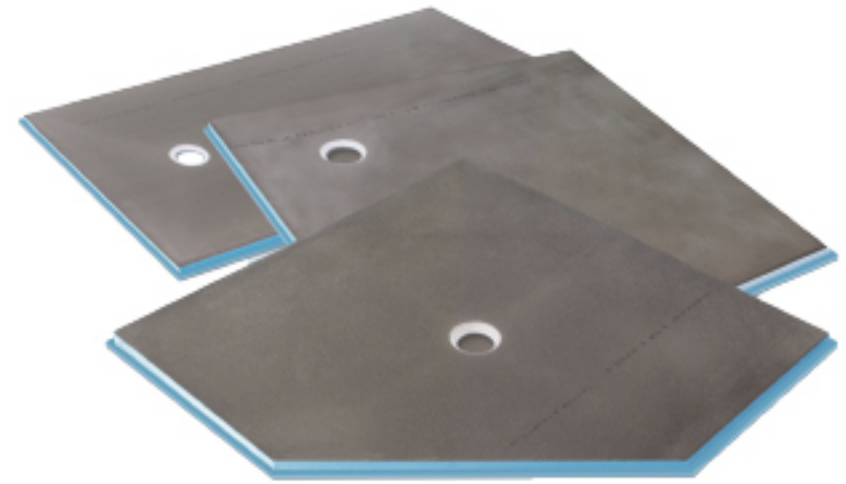


wedi Sealants



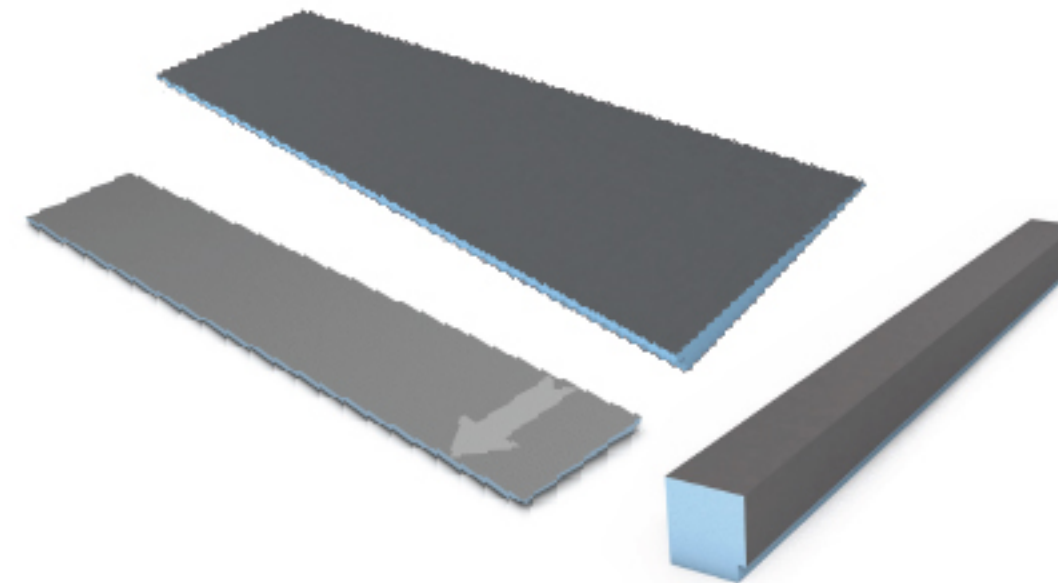
Choosing the right sealant for your application.



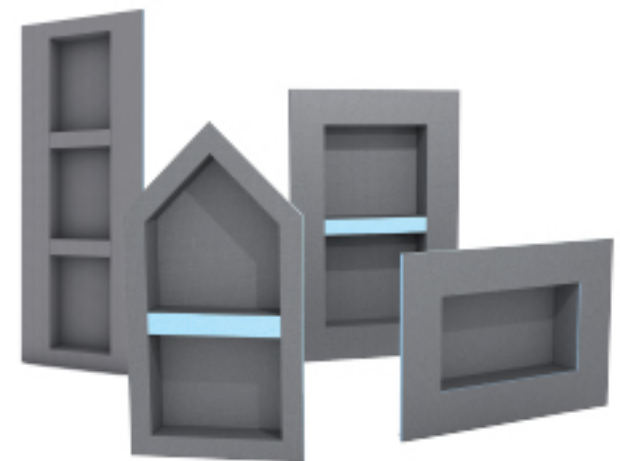
shower pans



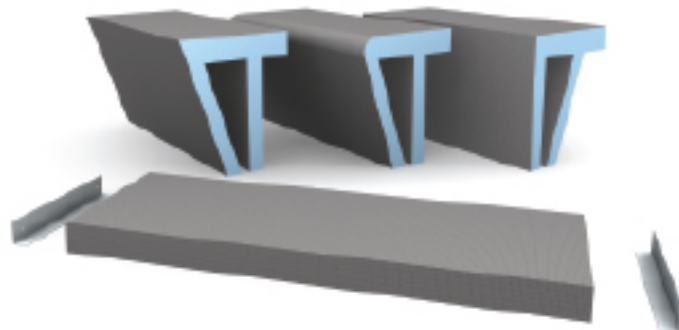
building panels



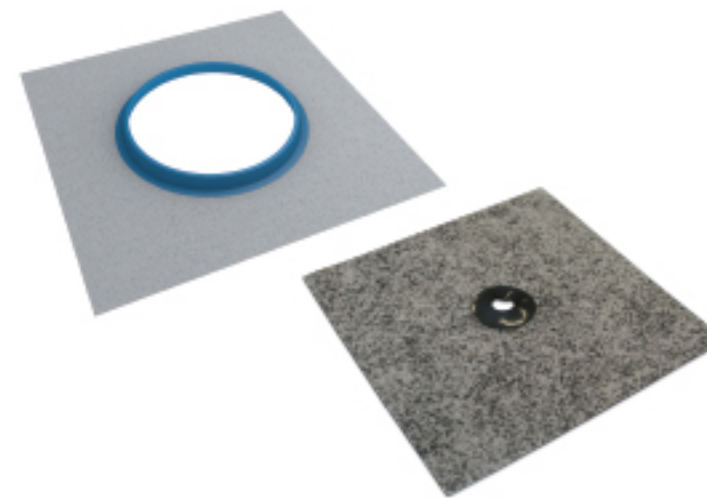
curbs, ramps & extension panels



niches



benches



flexi collars
(when NOT in a steam shower)



fasteners



wedi Joint Sealant

Light grey color

Application: Assembling wedi parts and pieces



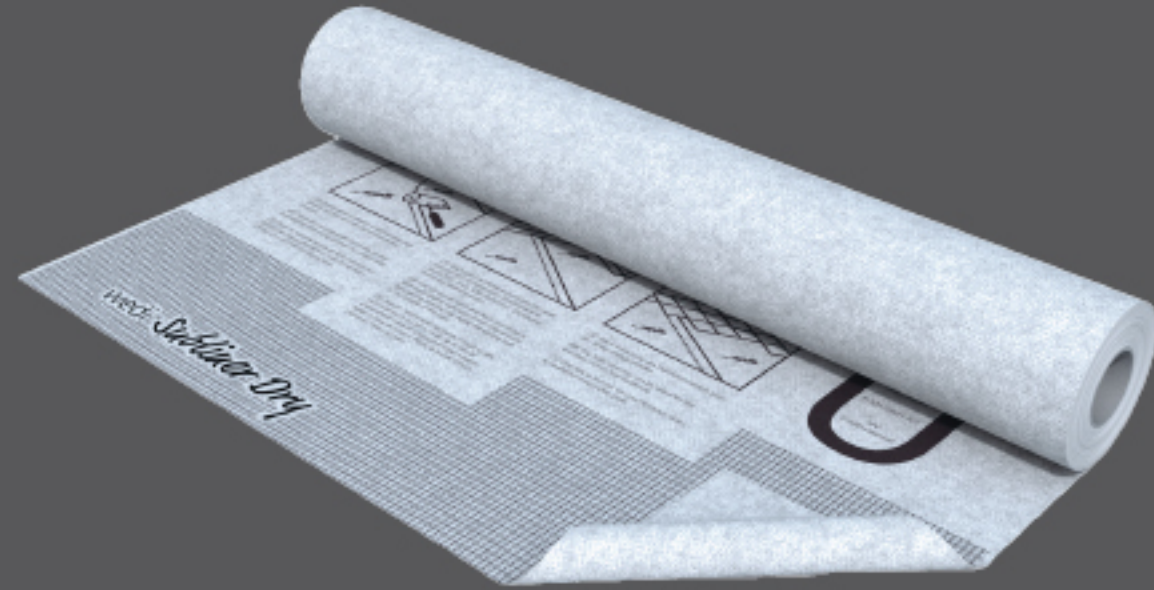
Using the wrong sealant will result in a system failure and leave you without warranty protection. Be sure you have chosen the right sealant for your projects!

Does not reflect best practices or wedi warranty information. Please refer to most current wedi Technical Handbook for all installation instructions and guidance.

wedi Sealants



Choosing the right sealant for your application.



subliner dry



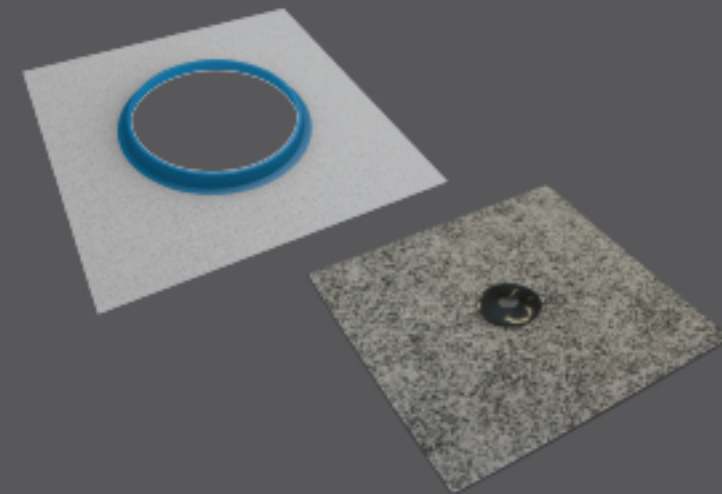
Vapor 85 steam shower boards



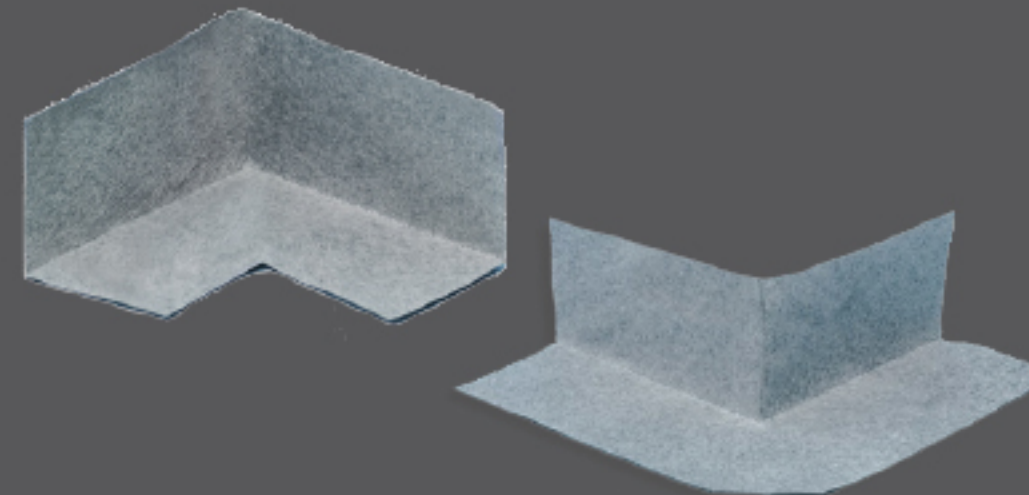
wedi 620 Sealant



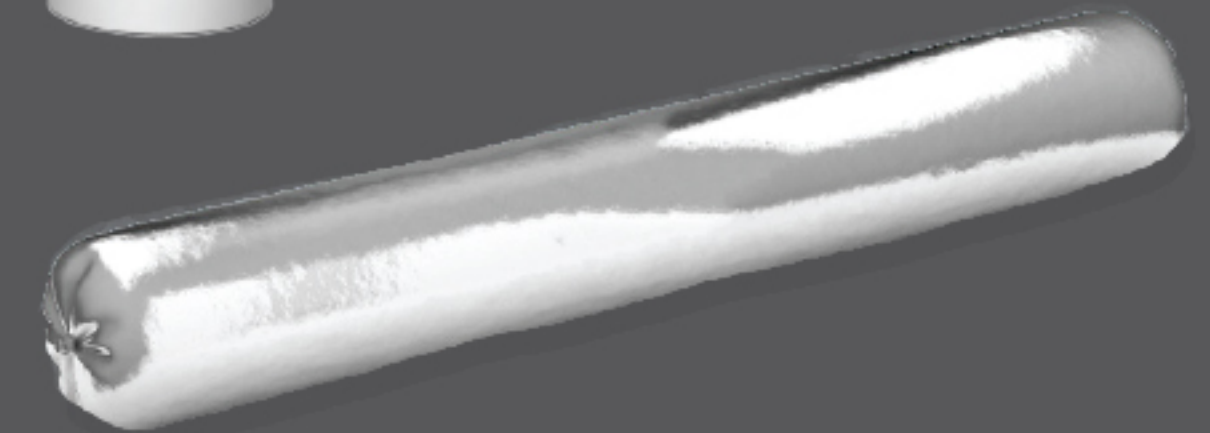
5" subliner fleece tape



flexi collars
(when using in a steam shower)



subliner corner
(inside or outside)



Dark grey color

Using the wrong sealant will result in a system failure and leave you without warranty protection. Be sure you have chosen the right sealant for your projects!

Application: Assembling wedi subliner fleece membranes or steam showers