



LINT TILE

WEDI® PRODUCTS

2023 - 2024 Edition



111 NOTCH LANE WENDEL, PA 15691
P: 800-245-5564 F: 724-446-9252
www.linttile.com



LINT TILE

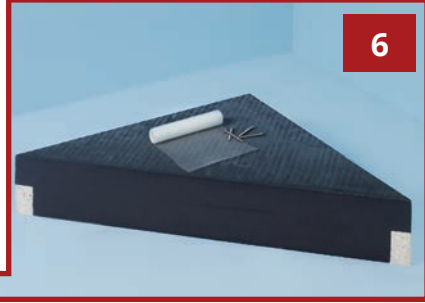
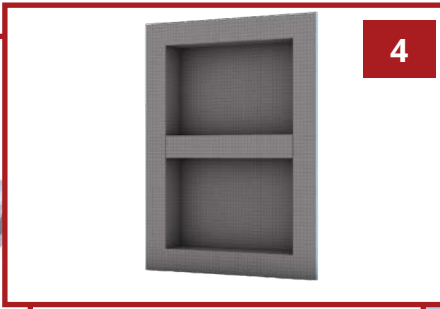


OUR PARTNER

wedi® engineers, designs, and makes complete shower systems that will help you build and protect your entire custom tiled shower and wet room design from floor to ceiling. Every wedi® product and our complete wedi® shower systems are made with two principles in mind: we use only premium quality raw materials and we build all the needed performances into one product. We also design these products to perfectly fit into our modular shower systems with as few parts to put together as possible. The simple nature of the wedi® shower system helps prepare tiled showers very fast, because it includes relatively few parts and pieces, and is easy to understand and assemble. This helps the installer to create a more consistent shower installation that reduces the likelihood of error, and is fully backed by a unique manufacturers' warranty. Both the premium material quality and the complete and consistent installation concept ensure that wedi® showers last decades. This massively reduces the need for replacements, which have a much higher negative impact on our environment each time they happen. At wedi® in Batavia, we source over 99% of our raw materials and product we need from safe and local partners in North America, mostly from partners located in neighboring states, and we also source and make products in Germany which are imported into the US. Since 2017, we have started to build up our manufacturing in Batavia and by 2023, we will produce all our wedi® products in Batavia proudly "Made in the USA" and also source 100% of all materials and product needed in North America.



Table of Contents



NICHES.....	3-4
SEATS & BENCHES.....	5-6
SHOWER CURBS.....	7
BUILDING PANELS.....	8
EXTENSIONS & RAMPS.....	9
SHOWER FINISHES.....	10-12
SHOWER INSTALLATION ACCESSORIES & FASTENERS.....	13-17
SHOWER CURBLESS KIT (LIGNO) & BASES.....	18
SHOWER LINEAR DRAIN KIT (RIOLITO) & BASES.....	19-20
SHOWER CURBED KIT (PRIMO) & BASES.....	21-22



NICHES



wedi® prefabricated shower niches are fabricated from wedi® 1/2 in. (12.7 mm) Building Panels for strength, and come in seven different size options to fit every shower necessity. wedi® shower niches install quickly, safely, and integrate flush into the wall panel assembly with wedi® fasteners and wedi® Joint Sealant. Shelves, included in some models, are flexible and can be installed exactly where they best fit the design. With little effort and with the use of wedi® Building Panels and joint sealant, niches can be cut to size, or even extended if needed. wedi® Shower Niches come with up to 2 adjustable or removable shelves. These shelves can be upgraded to Glass.

16X16, 16X12, 16X8 NICHES

Vendor Item #US3000005 - Style #WE-NI 16x16-GR
Vendor Item #US3000004 - Style #WE-NI 16x12-GR
Vendor Item #US3000003 - Style #WE-NI 16x8-GR

SQUARE

Exterior- **16 in. × 16 in.** x 4 in. (406 × 406 x 102 mm)

Interior- 12 in. x 12 in. x 3 1/2 in. (304 x 304 x 89 mm)

RECTANGULAR

Exterior- **16 in. × 12 in.** x 4 in. (406 × 305 x 102 mm)

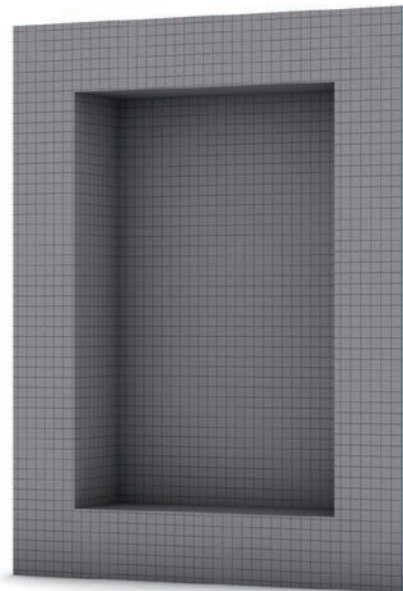
Interior- 12 in. x 8 in. x 3 1/2 in. (304 x 203 x 89 mm)

NARROW

Exterior- **16 in. × 8 in.** x 4 in. (406 × 203 x 102 mm)

Interior- 12 in. x 4 in. x 3 1/2 in. (304 x 102 x 89 mm)

No Shelf- Pictured 16x12



16X16- 1/CTN, 16X12- 1/CTN, 16X8- 1/CTN

One Shelf- Pictured Cathedral and 16x22



16x30 CATHEDRAL

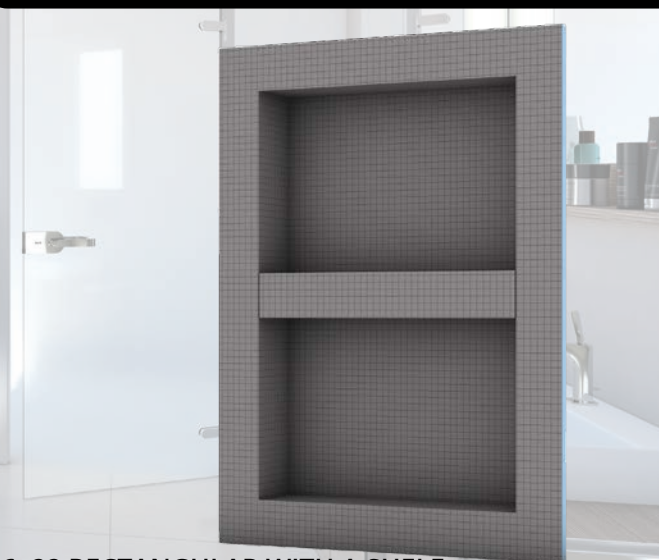
Exterior- 16 in. x 30 in. x 4 in. (406 x 762 x 102 mm)

Interior- 12 in. x 26 in. x 3 1/2 in. (304 x 660 x 89 mm)

16X30- 1/CTN, 16X22- 1/CTN

ONE SHELF NICHES

Vendor Item #US3000016 - Style #WE-NI 16x30-GR
Vendor Item #US3000007 - Style #WE-NI 16X22-GR



16x22 RECTANGULAR WITH A SHELF

Exterior- 16 in. x 22 in. x 4 in. (406 x 559 x 102 mm)

Interior- 12 in. x 18 in. x 3 1/2 in. (304 x 457 x 89 mm)

2 SHELF NICHE

Vendor Item #US3000024- Style #WE-NI 16x42-GR

NICHE WITH 2 REMOVABLE SHELVES

Upgradeable Shelves

ALUMINUM BLACK METAL

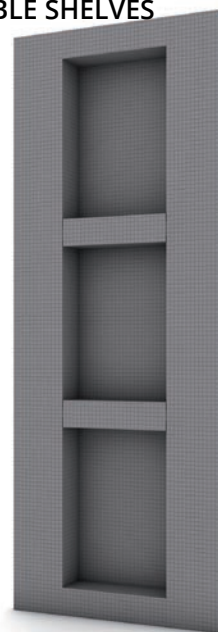
Vendor Item #US3000246- Style #WE-NI PAMB-SHLF

BRUSHED STAINLESS STEEL

Vendor Item #US3000245- Style #WE-NI PSSB-SHLF

GLASS

Vendor Item #US3000050- Style #WE-NI GL-SHLF

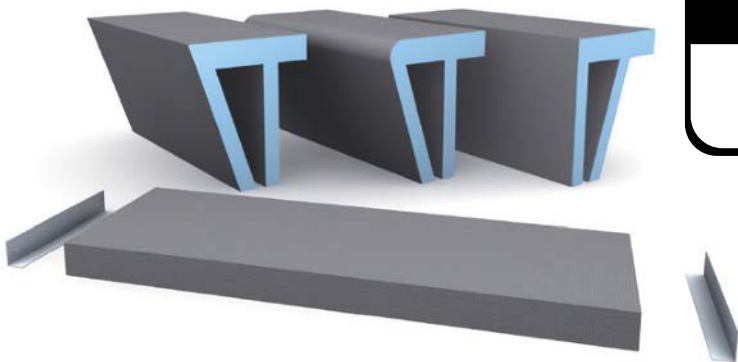


Exterior- 16 in. x 22 in. x 4 in. (406 x 559 x 102 mm)

Interior- 12 in. x 18 in. x 3 1/2 in. (304 x 457 x 89 mm)

16X42- 1/CTN

SEATS & BENCHES



SANOASA BENCHES

Vendor Item # & Style #- see table

wedi® Sanoasa Shower Benches

wedi® Sanoasa benches are constructed to enable unmatched freedom of visual design. Can be positioned in various ways, and their shapes and sizes can be modified for any project. The pre-sloped benches attach to shower wall and floor surfaces using wedi® Joint Sealant. With all floor-mounted options, the sloped shower floor forms a gap in areas where thin-set can be used as a filler, and mesh tape is applied over the thin-set or floor to create a reinforced seam that does not require waterproofing if installed over a wedi® shower base and system.

- 100% waterproof & vapor-retardant- wedi XPS foam
- Insulating properties
- No need for framework support
- Fast, clean, and efficient installation

Bench 1M - 90°	≈35 in. x 18 in. x 15 in. (900 x 454 x 380 mm)	Vendor# US3000042 Style# WE-SAN BEN-1M
Bench 2M - 72°	≈35 in. x 18 in. x 15 in. (900 x 454 x 380 mm)	Vendor# US3000044 Style# WE-SAN BEN-2M
Bench 3M- 72° Curved Corner	≈35 in. x 18 in. x 15 in. (900 x 454 x 380 mm)	Vendor# US3000046 Style# WE-SAN BEN-3M
Bench 1L - 90°	≈47 in. x 18 in. x 15 in. (1200 x 454 x 380 mm)	Vendor# US3000043 Style# WE-SAN BEN-1L
Bench 2L- 72°	≈47 in. x 18 in. x 15 in. (1200 x 454 x 380 mm)	Vendor# US3000045 Style# WE-SAN BEN-2L
Bench 3L- 72° Curved Corner	≈47 in. x 18 in. x 15 in. (1200 x 454 x 380 mm)	Vendor# US3000047 Style# WE-SAN BEN-3L
Bench 4 Straight	47 1/4 in. x 15 in. x 3 1/8 in. (1200 x 380 x 80 mm)	Vendor# US3000000 Style# WE-SAN BEN-4

1 UNIT, 1 UNIT/CTN

TRIANGULAR SEATS

Vendor Item #US3000001- Style #WE-SHO SEAT-M,
Vendor Item #US3000002- Style #WE-SHO SEAT-L,



Seat M	17 in. x 17 in. x 4 in. (432 x 432 x 100 mm)	Vendor# US3000001 Style# WE-SHO SEAT-M
Seat L	24 in. x 24 in. x 4 in. (610 x 610 x 100 mm)	Vendor# US3000002 Style# WE-SHO SEAT-L

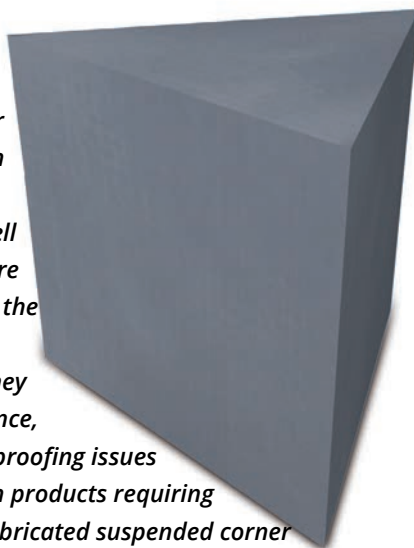
wedi® Shower Shelf or Suspended Corner Seat

- Modular seat, lounger, or design element
- 100% waterproof and vapor-retardant with the wedi XPS foam
- Insulating properties reduce vapor transmission pressure, and save energy
- No need for framework support- Carry up to 350lbs
- Fast, clean, and efficient installation of full prefabrication modules
- Create a dream wellness oasis in any place



1 UNIT, 1 UNIT/CTN

wedi's prefabricated shower seats and benches are much easier and faster to install than metal tray or concrete seats. They also bond well to thin-set mortar and are 100% waterproof due to the extruded polystyrene closed-cell foam core. They will not cause efflorescence, discolorations, or waterproofing issues frequently observed with products requiring mortar fills. wedi's prefabricated suspended corner seats do not require additional blocking installed in the framing, and the mounting brackets and their fastening points are hidden from water exposure and are fastened into existing wall studs. All wedi seats are pre-sloped on the surface except for the suspended seats.



1 UNIT, 1 UNIT/CTN

FULL FOAM TRIANGULAR SEAT

Vendor Item #073784101 - Style #WE-TR SEAT-FF

wedi® Triangle Seat Full Foam/Wall-Floor Adhered



23 in. x 23 in. (sides) x 20 in.
(584 x 584 (sides) x 508 mm)

SHOWER CURBS

Available in Standard or Lean

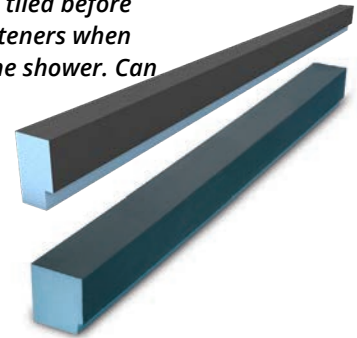
wedi® curbs and ramps are available in several options for shower entry designs where transitions are required, and can be installed with wedi® Fundo shower bases as well as conventional mortar bed systems. Waterproof and versatile, wedi® curbs and ramps may be tiled before glass doors, panels, or blocks are installed. Epoxy glue is recommended instead of screw fasteners when installing into wedi's solid foam curbs. Slightly sloped to direct water towards the drain of the shower. Can carry a weight of 280 lbs/ft.

Full Foam Curb	5 1/8 in. x 4 1/2 in. x 60 in.	Vendor # US3000039, Style # WE-CU CU-5-FF
Full Foam Curb	5 1/8 in. x 4 1/2 in. x 96 in.	Vendor # US3000041, Style # WE-CU CU-8-FF
Full Foam Curb- Lean	3 1/2 in. x 2 in. x 60 in.	Vendor # US3000038, Style # WE-CU CU-5-LN
Full Foam Curb- Lean	3 1/2 in. x 2 in. x 96 in.	Vendor # US3000040, Style # WE-CU CU-8-LN

1 UNIT, 1 UNIT/CTN

FULL FOAM CURBS

Vendor # US3000039, Style # WE-CU CU-5-FF

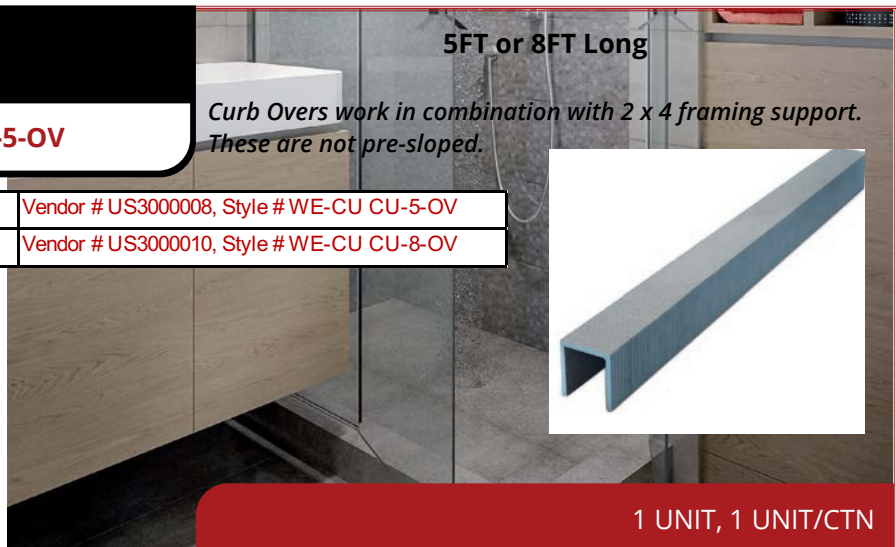


CURB OVERS

Vendor # US3000008, Style # WE-CU CU-5-OV

Curb Cover- 5ft.	5 in. x 4 5/8 in. x 60 in.	Vendor # US3000008, Style # WE-CU CU-5-OV
Curb Cover- 8ft.	5 in. x 4 5/8 in. x 96 7/8 in.	Vendor # US3000010, Style # WE-CU CU-8-OV

**Be careful not to allow the glass door installation or any fastener to penetrate the curb over, as it is your waterproofing. Anchor Track curbs are recommended for glass door installations.*



5FT or 8FT Long

Curb Overs work in combination with 2 x 4 framing support. These are not pre-sloped.

1 UNIT, 1 UNIT/CTN

Standard or Lean 5FT

Where fastening is required, use our wedi® Curb AT (with integrated Anchor Track).

Curb AT	5 1/8 in. x 4 1/2 in. x 60 in.	Vendor # US3000048, Style # WE-CU AT
Curb AT- Lean	3 1/2 in. x 2 in. x 60 in.	Vendor # US3000049, Style # WE-CU AT-LN

1 UNIT, 1 UNIT/CTN

ANCHOR TRACK CURBS

Vendor # US3000048, Style # WE-CU AT



BUILDING PANELS

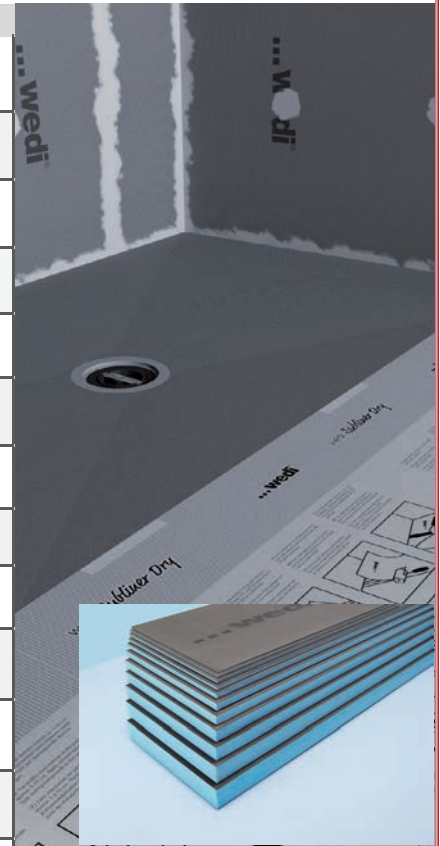
BUILDING PANELS

Vendor Item # & Style # see table

Built for Shower Walls/Wet Areas and Floors

wedi® Building Panels eliminate concerns like pinholes/voids and delamination typically associated with alternative waterproofing products.

Main Application	Length x Width x Height	Unit	Item #
Backsplash, tub decks, floors, under mosaic strips in field tile designs	24 in. x 48 in. x 1/8 in. (600 x 1219 x 4 mm)	10 sheets/box	Vendor # US8000006 Style # WE-PAN 1/8-GRAY
Tub decks, floors, with electric radiant heat	48 in. x 60 in. x 1/4 in. (1219 x 1524 x 6 mm)	25 sheets/pallet	Vendor # US8000013 Style # WE-PAN 4X5X1/4
Wall panel	36 in. x 60 in. x 1/2 in. (914 x 1524 x 12.7 mm)	50 sheets/pallet	Vendor # US8000017 Style # WE-PAN 1/2-GRAY
Wall panel	48 in. x 60 in. x 1/2 in. (1219 x 1524 x 12.7 mm)	50 sheets/pallet	Vendor # US8000014 Style # WE-PAN 4X5X1/2
Wall panel	48 in. x 96 in. x 1/2 in. (1219 x 2438 x 12.7 mm)	4 sheets/box	Vendor # US8000010 Style # WE-PAN 4X8X1/2
Wall panel	48 in. x 96 in. x 1/2 in. (1219 x 2436 x 12.7 mm)	50 sheets/pallet	Vendor # US8000015 Style # WE-PAN 4X8X1/2
Wall panel, aligns with 5/8 in. drywall	48 in. x 60 in. x 5/8 in. (1219 x 1524 x 15.8 mm)	4 sheets/box	Vendor # US8000011 Style # WE-PAN 4X5X5/8
Floor, aligns with Fundo Ligno bases to create extension to bathroom floor	48 in. x 60 in. x 3/4 in. (1219 x 1524 x 20 mm)	4 sheets/box	Vendor # US8000018 Style # WE-PAN 4X5X3/4
Wall panel, lines up with floated walls	48 in. x 60 in. x 1 in. (1219 x 1524 x 25.4 mm)	4 sheets/box	Vendor # US8000022 Style # WE-PAN 4X5X1
Constructing benches, floors to line up with Fundo Primo into bathroom	48 in. x 60 in. x 1 1/2 in. (1219 x 1524 x 40 mm)	2 sheets/box	Vendor # US8000019 Style # WE-PAN 4X5X11/2
Constructing benches and suspended seats, freestanding walls and partitions	48 in. x 60 in. x 2 in. (1219 x 1219 x 50 mm)	2 sheets/box	Vendor # US8000020 Style # WE-PAN 4X5X2
Wall panel, aligns with 5/8 in. drywall	48 in. x 60 in. x 5/8 in. (1219 x 1524 x 15.8 mm)	50 sheets/pallet	Vendor # US8000021 Style # WE-PAN 4X5X5/8
Constructing benches and suspended seats, freestanding walls and partitions	48 in. x 96 in. x 2 in. (1219 x 2438 x 50.8 mm)	12 sheets/pallet	Vendor # US8000016 Style # WE-PAN 4X8X2



SEE TABLE



1 PC 1 PC/CTN 50 CTN/PLT

VAPOR PANEL

Vendor Item #010702912- Style #WE-VAP 3X8X1/2

wedi® Vapor 85

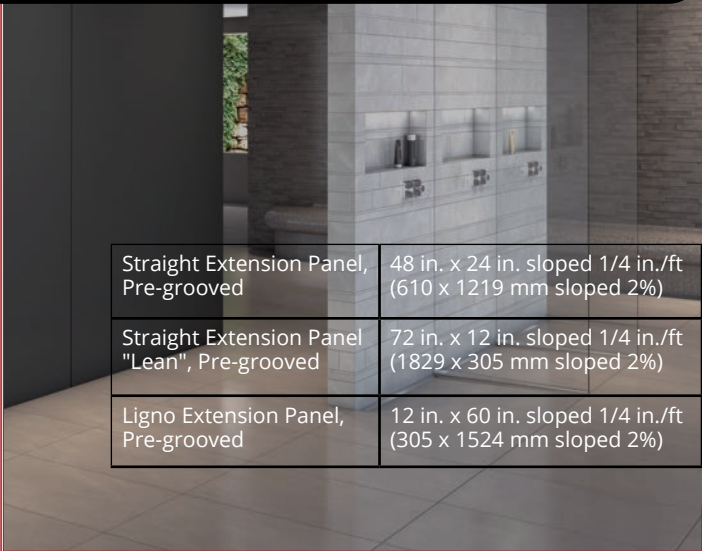
wedi® Vapor 85 is a tile backer board specifically made for use in steam showers/rooms. Its design is based on the wedi Building Panel, featuring added vaporproofing capability that works for all water vapor exposure levels, including continuous use and commercial steam rooms.



EXTENSIONS & RAMPS

SHOWER EXTENSIONS

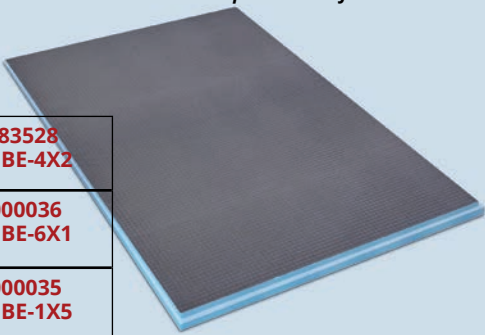
Vendor Item # & Style # see table



Straight Extension Panel, Pre-grooved	48 in. x 24 in. sloped 1/4 in./ft (610 x 1219 mm sloped 2%)	Vendor# 073783528 Style# WE-EX BE-4X2
Straight Extension Panel "Lean", Pre-grooved	72 in. x 12 in. sloped 1/4 in./ft (1829 x 305 mm sloped 2%)	Vendor# US3000036 Style# WE-EX BE-6X1
Ligno Extension Panel, Pre-grooved	12 in. x 60 in. sloped 1/4 in./ft (305 x 1524 mm sloped 2%)	Vendor# US3000035 Style# WE-EX BE-1X5

Prefabricated Sloped Extension Panels

The sloped extension panels come as a straight one way sloped base element, which can be added to Primo® / Ligno® shower base sides or miter cut and notch connected to make corner extensions that would extend the shower floor beyond one side. The extension panels fit to Riolito® 4 way slope models as well but the connection height to the groove / channel connection must be compensated for.



1 PC 1 PC/CTN

ADA Compliant Shower Ramp



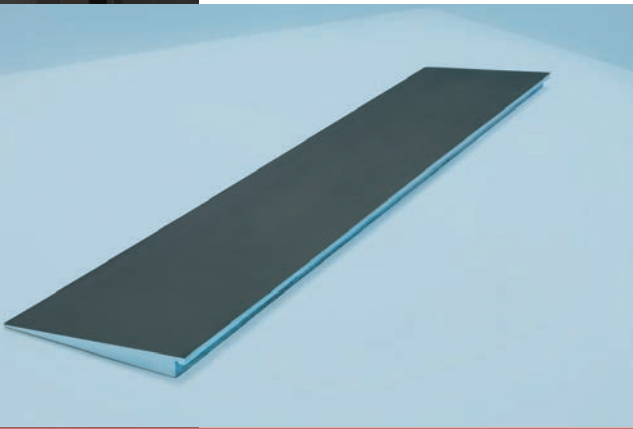
5 ft. x 15 in., sloped 1 1/2 in. to 1/4 in. (1524 x 406.4 mm, sloped 38.1 to 6.35 mm)

1 PC 1 PC/CTN

SHOWER RAMP

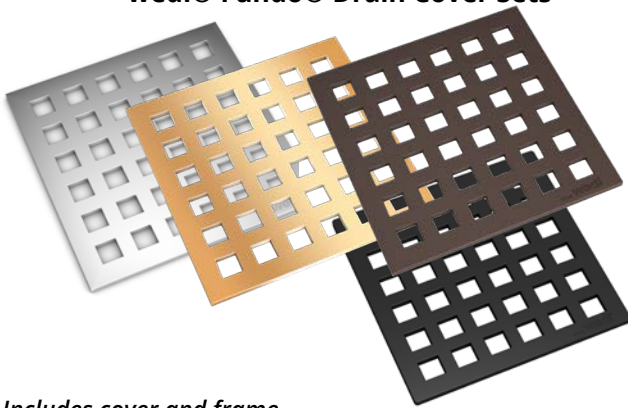
Vendor Item #073736517- Style #WE-EX SR-5X1

For ADA compliant entry designs without a recessed shower floor space use an ADA ramp to create safe access onto the shower floor.



SHOWER FINISHES

wedi® Fundo® Drain Cover Sets



Includes cover and frame.

1 UNIT/CTN

DRAIN COVER SETS

Vendor Item # & Style # see table

Drain Cover Set Stainless Steel	3 3/4" x 3 3/4" x 1/4"	Vendor# US1000057 Style# WE-FUN STA-ST
Drain Cover Set Chrome	3 3/4" x 3 3/4" x 1/4"	Vendor# US1000054 Style# WE-FUN CHROME
Drain Cover Set Gold	3 3/4" x 3 3/4" x 1/4"	Vendor# US1000055 Style# WE-FUN GOLD
Drain Cover Set Oil Rubbed Bronze	3 3/4" x 3 3/4" x 1/4"	Vendor# US1000056 Style# WE-FUN OIL-RB
Drain Cover Set Matte Black	3 3/4" x 3 3/4" x 1/4"	Vendor# US1000058 Style# WE-FUN BLACK

TILEABLE COVER PLATES

Vendor Item #US1000060- Style #WE-FUN FIN-TCP1-4
Vendor Item #US1000047- Style #WE-FUN FIN-TCP3-8

For use with Fundo® Primo® and Ligno® Bases. Tileable cover plate surface is elevated 1/16 in. over tile surface of a Fundo® base. For a flush tile installation, wedi® Joint Sealant spot bonding may be used to install the tile inside the cover so height is reduced versus the thinset bed build up under the tile on the shower base. Unit includes the cover and frame.

3 3/4" x 3 3/4" x 1/4"
3 3/4" x 3 3/4" x 3/8"

wedi® Fundo® Tileable Drain Cover Plate



1 UNIT/CTN

**wedi® Premium Drain Cover
for Fundo® Primo® and Ligno®**



1 UNIT/CTN

SLOTTED DRAIN COVER SET

Vendor Item #US1000053- Style #WE-FUN SS-SLOT

High grade, polished stainless steel with slotted design. Consists of the cover and the frame.



CHANNEL FRAME

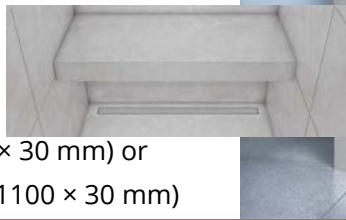
Vendor Item #676800061- Style #WE-FUN FRAME -28

Vendor Item #676800061- Style #WE-FUN FRAME -43

**wedi® Fundo® Riolito®
Channel Frame Drain Cover**

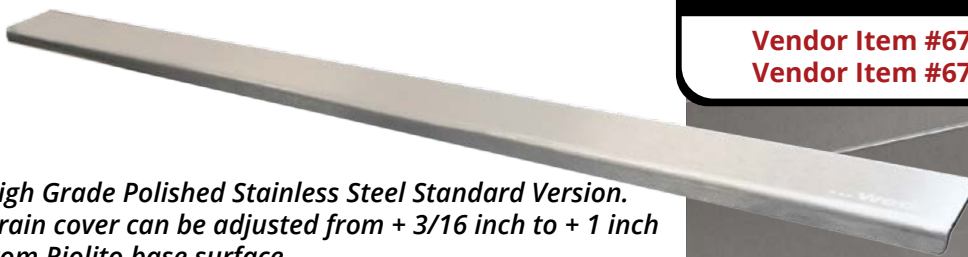
High grade stainless steel channel frame. Made of brushed stainless steel. Kit includes installation support foam spacer.

2.5" × 28" × 1/4" (63 × 700 × 30 mm) or
2.5" × 43.75" × 0.25" (63 × 1100 × 30 mm)



1 UNIT/CTN

wedi® Fundo® Riolito® Standard Cover Plate



High Grade Polished Stainless Steel Standard Version. Drain cover can be adjusted from + 3/16 inch to + 1 inch from Riolito base surface.

1 5/8" × 43 1/4" × 3/4" (41 × 1100 × 19 mm) or
1 5/8" × 27 5/8" × 3/4" (41 × 700 × 19 mm)

1 UNIT/CTN

STANDARD COVER PLATE

Vendor Item #676797048- Style #WE-RIO CO-1X27

Vendor Item #676797045- Style #WE-RIO CO-1X43



EXCLUSIVE COVER PLATE

Vendor Item #676797049- Style #WE-FUN EXC-28,
Vendor Item #676797046- Style #WE-FUN EXC-43



1 5/8" × 43 1/4" × 3/4" (41 × 1100 × 19 mm) or
1 5/8" × 27 5/8" × 3/4" (41 × 700 × 19 mm)

wedi® Fundo® Riolito® Exclusive Cover Plate

*High Grade Double Plated Stainless Steel Version.
Drain cover can be adjusted from + 3/16 inch to + 1
inch from Riolito base surface.*



1 UNIT/CTN

wedi® Fundo® Riolito® Tileable Cover Plate



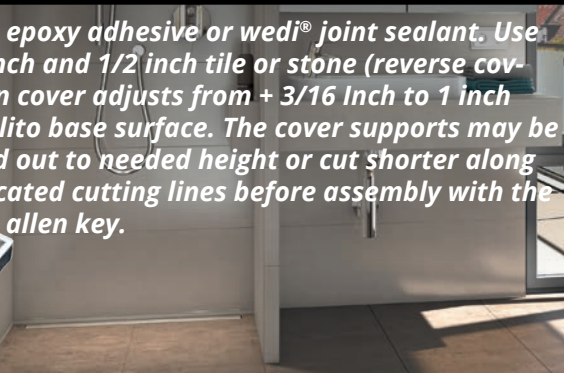
1 5/8" × 43 1/4" × 3/4" (41 × 1100 × 19 mm),
1 5/8" × 27 5/8" × 3/4" (41 × 700 × 19 mm)

1 UNIT/CTN

TILEABLE COVER PLATE

Vendor Item #676797050- Style #WE-RIO CO-1X27T
Vendor Item #676797047- Style #WE-RIO CO-1X43T

*Tile with epoxy adhesive or wedi® joint sealant. Use
for 1/4 inch and 1/2 inch tile or stone (reverse cover).
Drain cover adjusts from + 3/16 Inch to 1 inch
from Riolito base surface. The cover supports may be
extended out to needed height or cut shorter along
prefabricated cutting lines before assembly with the
included allen key.*



PREMIUM COVER PLATE

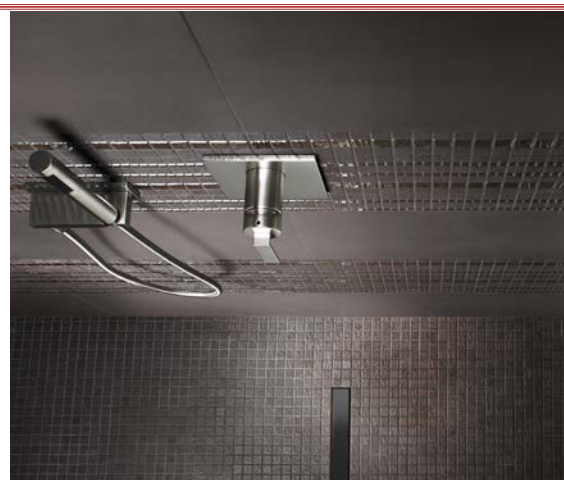
Vendor Item #US1000082- Style #WE-FUN PRE-CP-28
Vendor Item #US1000083- Style #WE-FUN PRE-CP-43



wedi® Fundo® Riolito® Premium Linear Drain Cover

*Stainless Steel Metal finished in Matte
Black.*

1 5/8" × 43 1/4" × 3/4" (41 × 1100 × 19 mm) or
1 5/8" × 27 5/8" × 3/4" (41 × 700 × 19 mm)



1 UNIT/CTN

SHOWER INSTALLATION ACCESSORIES & FASTENERS



JOINT SEALANT

Vendor Item #US5000013- Style #WE-SEA JO-SEA
Vendor Item #US5000010- Style #WE-SEA JO-SEA20

wedi® SMP Polymer Sealant and Adhesive



A flexible sealant and construction adhesive that creates strong connections between wedi assembly parts without additional tape reinforcement—used for standard wedi shower installations with the wedi Fundo Primo, Fundo Ligno and Fundo Riolo. Use in wedi shower assemblies to adhere, seal and reinforce seams and connections and waterproof fastener points (No additional taping). A single component Silyl Modified Polymer (SMP) especially formulated for high green strength (high immediate internal strength), adhesion in wet and alkaline environments, and permanent flexibility. The product forms strong connections between wedi components and provides watertight seals on and in joints and seams, and allows for dissipation of stress caused by shock, vibration, or thermal movement. It is used to waterproof, connect and reinforce seams or fastener points.

10.5 OZ CARTRIDGE OR 20 OZ SAUSAGE

SEALANT 620

Vendor Item #US5000088- Style #WE-VAP SEA-62010
Vendor Item #US5000083- Style #WE-VAP SEA-620

wedi® 620 Vapor-tight Flexible Sealant

- Use with a wedi® Sealing Tape to Dry Sheet Waterproof.
- Strong Connect Vapor 85 Assemblies.
- Waterproof/Affix Sealing Tape over Seams and Fastener Points.
- For Any wedi Subliner Dry Products.



wedi® Sealant 620 is indispensable in combination with wedi® Vapor 85 and wedi Subliner Dry. wedi® 620, unlike wedi® joint sealant, is not a stand-alone construction adhesive. Where wedi® 620 is used to adhere, connect and seal assembly parts, it needs to be used in combination with wedi Subliner Dry sealing tape reinforcing all seams and joints.



10.5 OZ CARTRIDGE OR 20 OZ SAUSAGE

SAUSAGE GUN + TIP

Vendor Item #US5000019- Style #WE-SEA JO-GUN,
Vendor Item #US5000020- Style #WE-SEA RE-TIP



wedi® Sausage Gun & Replacement Tips



Easily apply wedi® Joint Sealant or Sealant 620. Used with either 10.5oz cartridges or 20oz sausages.



1 GUN/CTN, 10TIPS/CTN

Used to aid waterproof and vaporproof transition between floor and curbless shower or steam room access. Average curbless shower installation uses 2 rolls of 16ft. long wedi Subliner Dry® mat. Packaged in 16 foot long (53 sqft.) or 98 foot long (322sqft.) rolls (Sheets are 3 foot wide).



39" x 16' (53 sqft) or
 39" x 98' (322 sqft)

1 ROLL/CTN

SUBLINER DRY SHEET MEMBRANE

Vendor Item #US5000001- Style #WE-SUB MAT-39x16,
Vendor Item #US5000005- Style #WE-SUB MAT-39x98

wedi® Subliner® Dry Waterproofing
 Sheet Membrane



SEALING TAPE

Vendor Item #US5000002- Style #WE-SUB TAP-5X32



Fleece Laminated Waterproof Sealing Tape

Used to waterproof, vaporproof, and secure transition seams in steam applications. Average 3 x 6 foot steam shower with 4 walls, ceiling and 2 benches uses 3 rolls of wedi sealing tape.



5" x 32.8' (127 mm x 10 m)

1 ROLL/CTN





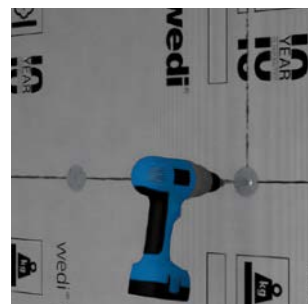
1 BOX/CTN

STEEL TAB WASHERS

Vendor Item #US5000009- Style #WE-FAS WAS-1000

wedi® Galvanized Tab Steel Washers

wedi® 1 1/4" tabbed washers provide four tabs for fast and secure placement & a solid gauge according to ISO standards and less potential for deformation. Install wedi® Building Panels to wall framing using wedi® fasteners & washers for safe load distribution.



1 1/4" - 1000 PCS/BOX

COARSE THREAD SCREWS

Vendor Item #US5000012- Style #WE-FAS SCR-1000

Ceramic Coated Coarse Thread Screws

Use Non-Rust Phillips head Screws with ceramic coating (ACQ compliant) with wood or metal framing 20 gauge or lighter.

Also Available:

Self Tapping Screws for Metal Studs-

Vendor Item # US5000018

1 1/4" - 100 PCS/BOX



1 5/8" - 1000 PCS/BOX

1 BOX/CTN



Pictured

100 Coarse Thread Screws - 1 5/8"

100 Tab Steel Washers - 1 1/4"

200 PCS/BOX 1 BOX/CTN

FASTENER KITS

TAB- Vendor Item #US5000070- Style #WE-FAS SCR-100,
NO TAB- Vendor Item #US5000086- Style #WE-FAS MET-1-5/8

wedi® Tabbed or Tabless Fastener Kit

Plan to use 1 wedi screw and washer per ft² of wedi Building Panel. Tabbed washers provide four tabs for fast and secure placement. Use tabless for flooring with 1/4 in. panel, as well as with the wedi Vapor 85 Building Panel.

Not Pictured-

100 Coarse Thread Screws - 1 5/8"

100 Tabless Steel Washers - 1 1/4"

TUB SEALING TAPE

Vendor Item #US5000084- Style #WE-SUB TAPE-TUB

wedi® Tub Sealing Tape with Waterproof Butyl Connection Strip

Use with acrylic and plastic tubs and showers to waterproof tub edges without nailing flange to wall assemblies.

4.72" × 11.8' (120 mm × 3.6 m)



1 ROLL/BOX, 1 BOX/CTN



5" × 82' (125 mm × 25 m)

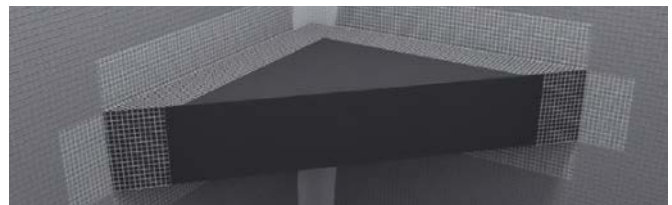
1ROLL/CTN

MESH TAPE

Vendor Item #095225053- Style # WE-SUB TAPE-MESH

Self Adhesive Mesh Tape

Use to cover joints, seals and transitions.



CORNER SEAL TAPE

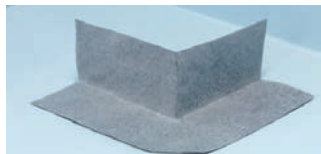
Vendor Item #US5000007- Style #WE-SUB IN-COR,
Vendor Item #US5000008- Style #WE-SUB OUT-COR

Self Adhesive Mesh Tape

*Apply to any corners within
36" of the wet area.*



4 3/4" × 4 3/4" × 2 1/4"
(115 × 115 × 57.15 mm)



2/PACK, 1PACK/CTN

CORNER PUTTY KNIFE

Vendor Item #US5000044- Style #WE-SEA JO-KN

Corner Putty Knife

*Use to smooth out wedi®
Joint Sealant applications.*



1PC/BAG

25 BAGS/CTN

RECESS INSTALLATION KIT

Vendor Item #US5000085- Style #WE-FUN LIG-KIT

For recessing plywood floors between floor joists or a wedi® Fundo® Ligno® Shower Base up to 60 in. x 60 in. (1524 x 1524 mm) in size. Can be used for over 16" o.c. 2 x 10 solid joists as well as engineered joists.



wedi® Fundo® Ligno® Recess Installation Kit



5' x 5' for 3/4" Plyboard

1 UNIT /CTN

wedi® Fundo® Click and Seal™ Drain



CLICK AND SEAL™ DRAIN

Vendor Item # See Table

Item#	Name	Includes
Vendor # 77000054	Fundo Click and Seal™ Height Adjustment Kit	Drain Cover Extension, Alignment Ring 1, Snap Ring 2
Vendor # US9500100	Fundo Click and Seal™ Replacement Kit Copper Pipe	Special Sealing Gasket and Compression Spacer for Copper Pipe, Lubricant
Vendor # US9400101	Fundo Click and Seal™ Drain Kit 2"	Drain Body, Sealing Gasket, Compression Spacer, Locking Nut, Strainer key, Lubricant

"Click" sound as check point marks visible from top view into drain confirm the drain has properly sealed to wedi base.

1 UNIT/CTN

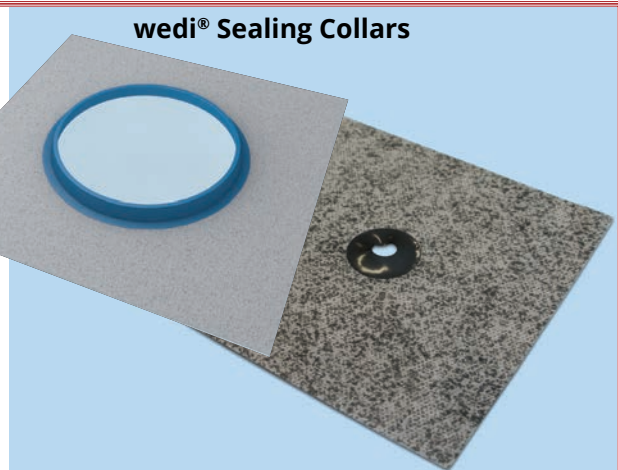
SEAL COLLARS

Vendor Item # - Style # See Table

Item #	Name	Size
Vendor # US5000033 Style # WE-SUB COL-PIP	Flexi Collar 1/2"-3/4" Pipe Protrusion	4 3/4" x 4 3/4" (115 x 115 mm)
Vendor # US5000000 Style # WE-SUB MIX-VAL	Mixing Valve Flexi Collar	ø 3 15/16" (100 mm)

These can be installed in all shower and steam room installations with wedi Subliner Dry and the wedi Vapor 85 system. In steam room installations be sure to use wedi 620 Sealant. In wedi Fundo shower assemblies and where applied over wedi Building Panel, you may use regular wedi Joint Sealant to install the products.

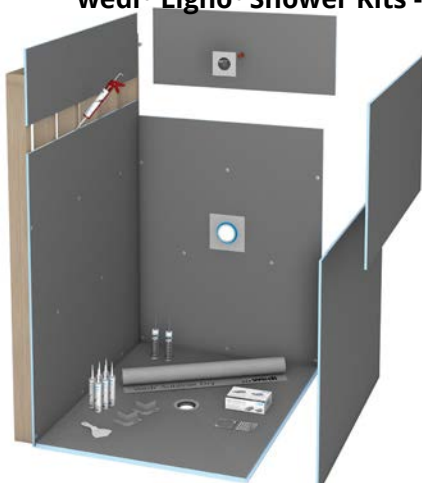
wedi® Sealing Collars



1 UNIT/CTN

CURBLESS SHOWERS LIGNO KITS & BASES

wedi® Ligno® Shower Kits - Center Drains



Install in all shower and steam room installations with wedi® Subliner Dry and the wedi® Vapor 85 system.

1 KIT/CTN

- pre-sloped Ligno® shower base
- wedi® Building Panels to cover 3 shower walls (one long side, two short side walls) up to 80 inches tall
- Fundo® Click and Seal™ Drain unit
- wedi® Fundo® Standard Drain Cover
- 10.5 oz tubes of wedi® Joint Sealant

- 10.5 oz tubes of wedi® Sealant 620
- wedi® Subliner Dry Mat
- wedi® Corner Putty Knife
- wedi® Subliner Dry Sealing Tape Outside Corners
- wedi® Fastener Kit (1 screws/washers 100 count box)
- wedi® Mixing Valve Flexi Collar

CURBLESS SHOWER KITS

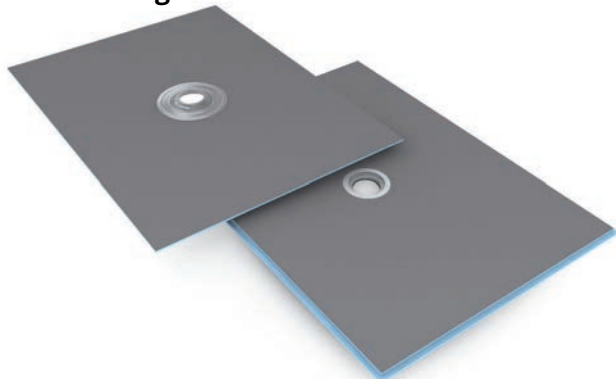
Vendor Item # & Style # See Table

Item #	Name	Dimensions
Vendor # US2000060 Style # WE-FUN LIG-3x5KIT	Center Drain Kit	36" x 60" (914 x 1524 mm)
Vendor # US2000063 Style # WE-FUN LIG-42x42KIT	Center Drain Kit	42" x 42" (1066 x 1066 mm)
Vendor # US2000061 Style # WE-FUN LIG-4x5KIT	Center Drain Kit	48" x 60" (1219 x 1524 mm)

CURBLESS SHOWER BASES

Vendor Item # & Style # See Table

wedi® Ligno® Shower Bases - Center Drains



Item #	Name	Dimensions
Vendor # US9200001 Style # WE-FUN LIG-3x4	Center Drain Base Only	36" x 48" (914 x 1220 mm)
Vendor # US9200003 Style # WE-FUN LIG-3x5	Center Drain Base Only	36" x 60" (914 x 1524 mm)
Vendor # US9200006 Style # WE-FUN LIG-42x42	Center Drain Base Only	42" x 42" (1066 x 1066 mm)
Vendor # US9200002 Style # WE-FUN LIG-4x4	Center Drain Base Only	48" x 48" (1220 x 1220 mm)
Vendor # US9200004 Style # WE-FUN LIG-4x5	Center Drain Base Only	48" x 60" (1220 x 1524 mm)
Vendor # US9200005 Style # WE-FUN LIG-5x5	Center Drain Base Only	60" x 60" (1524 x 1524 mm)

1 BASE/CTN



LINEAR DRAIN SHOWERS RIOLITO KITS & BASES

RIOLITO KIT

Vendor Item # US2000062 - Style #

Riolito® Line & Extension Module

- wedi® Building Panels to cover three shower walls (one long side, two short side walls) up to 80" tall
- Fundo Click and Seal Drain unit
- 10.5 oz tubes of wedi Joint Sealant
- Fundo Riolito® 32 in. Line Module
- Fundo Riolito® 32 in. Extension Module
- Fundo Riolito® Standard Cover Plate
- wedi® Curb, Lean
- wedi® Fastener Kit (1 screws/washers 100 count box)
- wedi® Corner Putty Knife
- Mixing Valve Flexi Collar
- Flexi Collar

32" x 72" One-Sided Slope
(813 x 1830 mm)



1 KIT /CTN

wedi® Fundo® Riolito® Shower Base with Integrated Channel



1 BASE /CTN

RIOLITO BASES

Vendor Item # & Style # See Table

These presloped and waterproof shower bases come with an integrated linear drain channel and wedi Click and Seal™ drain unit and feature a 4 way slope design and level perimeter for safe recessing into a subfloor construction.

ITEM #	Description	Dimensions	Channel
Vendor # US9310001 Style # WE-RIO RIO-3X5	4-Sided Slope Neo Base	36" x 60" (914 x 1524 mm)	43 5/16" (1100 mm)
Vendor # US9310002 Style # WE-RIO RIO-4X5	4-Sided Slope Neo Base	48" x 60" (1220 x 1524 mm)	27 1/2" (700 mm)
Vendor # US9310003 Style # WE-RIO RIO-4X6	4-Sided Slope Neo Base	48" x 72" (1220 x 1830 mm)	43 5/16" (1100 mm)

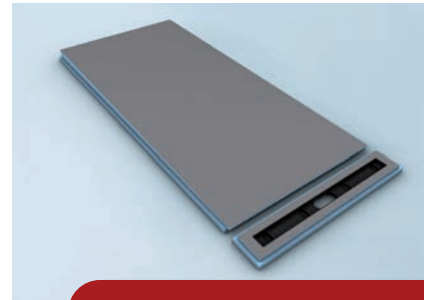
RIOLITO MODULAR BASES

Vendor Item # & Style # See Table

ITEM#	DESCRIPTION	DIMENSIONS	CHANNEL
Vendor # US9320001 Style # WE-RIO LI-48X5	Line Module	32 in. × 5 3/4 in. (813 × 146 mm) Height Line Module: 1 3/8 in. (35.4 mm)	27 1/2 in. (700 mm)
Vendor # US9320002 Style # WE-RIO LI-48X5	Line Module	48 in. × 5 3/4 in. (1220 × 146 mm) Height Line Module: 1 3/8 in. (35.4 mm)	43 5/16 in. (1100 mm)
Vendor # 075100050 Style # WE-RIO EX-32X66	Extension Module	32 in. × 66 3/4 in. (813 × 1700 mm) Height Extension Module: 1 3/8 in. (35.4 mm) – 2 3/16 in. (55.6 mm)	–
Vendor # 075100051 Style # WE-RIO EX-48X66	Extension Module	48 in. × 66 3/4 in. (1200 × 1700 mm) Height Extension Module: 1 3/8 in. (35.4 mm) – 2 3/16 in. (55.6 mm)	–

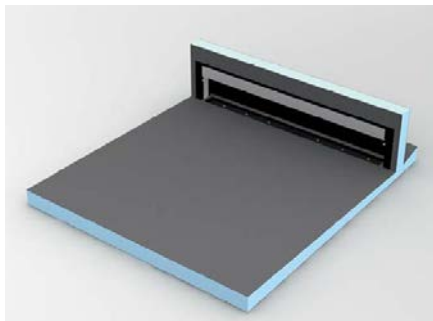
wedi® Fundo® Riolito® Modular Shower Base - with Integrated Channel

wedi® Fundo® Riolito® Modular Shower Bases consists of two components- line drain module and extension module, featuring a one way slope with close to wall drain placement.



1 UNIT /CTN

Discreto® System Component for Creating Vertical Wall Drainage



1 UNIT/CTN

DISCRETO COMPONENT

Vendor Item # & Style # See Table

ITEM#	DESCRIPTION	DIMENSIONS
Vendor # 073738206 Style # WE-FUN DISC-COMP-35	Fundo Discreto Component	35 2/5" x 6" x 3 1/15" (900 x 154 x 80 mm)
Vendor # 073738209 Style # WE-FUN DISC-COMP-47	Fundo Discreto Component	47 1/4" x 6" x 3 1/15" (1200 x 154 x 80 mm)

Discreto unit must be built in over Riolito/Riolito Modular channel and integrated into a seat, bench or built out wall made from 2 inch wedi Building Panels.

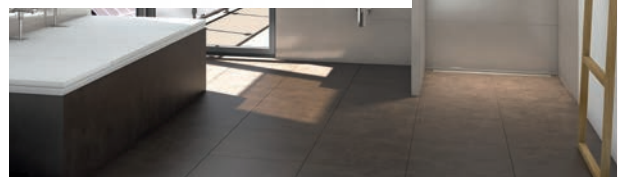
TUB SURROUND KIT

Vendor Item # US4000001- Style #

wedi® Shower and Bath Tub Surround Kit

- (5) wedi 3' x 5' x 1/2" Building Panels (914 x 1524 x 12.7 mm)
- (5) wedi Joint Sealant, 10.5 oz. (310 ml)(1) Mixing Valve Flexi Collar
- (1) Flexi Collar and Mixing Valve Flexi Collar
- (1) Corner Putty Knife
- 100 ct. of wedi Tab Steel Washers and Screws

wedi® Tub Surround Kit



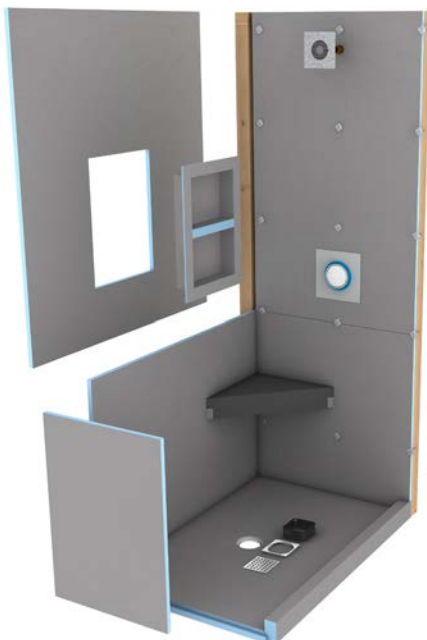
1 UNIT/CTN



CURBED SHOWERS PRIMO KITS & BASES

The original wedi Fundo® shower base. These robust, pre-sloped, waterproof shower floor bases come with a wedi Click and Seal™ drain unit. You can select one of our square wedi Premium drain cover options to fit the preferred design.

- pre-sloped Primo shower base
- wedi Building Panels to cover three shower walls (one long side, two short side walls) up to 80 inches tall
- Fundo Click and Seal Drain unit
- 10.5 oz tubes of wedi Joint Sealant
- wedi Curb, Lean



1 KIT/CTN

PRIMO SHOWER KITS

Vendor Item # & Style # See Table

wedi Fundo® Primo® Shower Kit

- wedi Fundo Primo Shower Base (10 shower base options available)
- wedi Fastener Kit (1 screws/washers 100 count box)
- wedi Corner Putty Knife
- wedi Mixing Valve Flexi Collar
- wedi Flexi Collar

ITEM#	DESCRIPTION	DIMENSIONS
Vendor # US2000002 Style # WE-PRI KIT-3X3	Center Drain	36" x 36" (914 x 914 mm)
Vendor # US2000009 Style # WE-PRI KIT-3X4	Center Drain	36" x 48" (914 x 1219 mm)
Vendor # US2000003 Style # WE-PRI KIT-3X5	Center Drain	36" x 60" (914 x 1524 mm)
Vendor # US2000001 Style # WE-PRI KIT-3X6	Center Drain	36" x 72" (914 x 1830 mm)
Vendor # US2000008 Style # WE-PRIO KIT-3X6	Offset Drain	36" x 72" (914 x 1830 mm)
Vendor # US2000015 Style # WE-PRI KIT-42X42	Center Drain	42" x 42" (1066 x 1066 mm)
Vendor # US2000013 Style # WE-PRI KIT-42X5	Center Drain	42" x 60" (1066 x 1524 mm)
Vendor # US2000014 Style # WE-PRI KIT-42X6	Center Drain	42" x 72" (1066 x 1830 mm)
Vendor # US2000010 Style # WE-PRI KIT-4X4	Center Drain	48" x 48" (1219 x 1219 mm)
Vendor # US2000011 Style # WE-PRI KIT-4X5	Center Drain	48" x 60" (1219 x 1524 mm)
Vendor # US2000012 Style # WE-PRI KIT-4X6	Center Drain	48" x 72" (1219 x 1830 mm)

PRIMO SHOWER BASES

Vendor Item # & Style # See Table

ITEM #	DESCRIPTION	DIMENSION
Vendor # US9100001 Style # WE-PRI BASE- 3X3	Center Drain	36" x 36" (914 x 914 mm)
Vendor # US9100002 Style # WE-PRI BASE- 3X4	Center Drain	36" x 48" (914 x 1220 mm)
Vendor # US9100004 Style # WE-PRI BASE- 3X5	Center Drain	36" x 60" (914 x 1524 mm)
Vendor # US9100006 Style # WE-PRI BASE- 3X6	Center Drain	36" x 72" (914 x 1830 mm)
Vendor # US9100005 Style # WE-PRI BASEO- 3X6	Offset Drain	36" x 72" (914 x 1830 mm)
Vendor # US9100017 Style # WE-PRI BASE- 42X42	Center Drain	42" x 42" (1066 x 1066 mm)
Vendor # US9100007 Style # WE-PRI BASE- 42X60	Center Drain	42" x 60" (1066 x 1524 mm)
Vendor # US9100008 Style # WE-PRI BASE- 42X72	Center Drain	42" x 72" (1066 x 1830 mm)
Vendor # US9100003 Style # WE-PRI BASE- 4X4	Center Drain	48" x 48" (1220 x 1220 mm)
Vendor # US9100009 Style # WE-PRI BASE- 4X5	Center Drain	48" x 60" (1220 x 1524 mm)
Vendor # US9100010 Style # WE-PRI BASE- 4X6	Center Drain	48" x 72" (1220 x 1830 mm)
Vendor # US9100014 Style # WE-PRI BASE- 4X7	Center Drain	48" x 84" (1220 x 2134 mm)
Vendor # US9100011 Style # WE-PRI BASE- 5X5	Center Drain	60" x 60" (1524 x 1524 mm)
Vendor # US9100012 Style # WE-PRI BASE- 5X6	Center Drain	60" x 72" (1524 x 1830 mm)
Vendor # US9100013 Style # WE-PRI BASECO- 5X6	Corner, Offset	60" x 72" (1524 x 1830 mm)
Vendor # US9100015 Style # WE-PRI BASE- 5X7	Center Drain	60" x 84" (1524 x 2134 mm)
Vendor # US9100016 Style # WE-PRI BASE- 6X6	Center Drain	72" x 72" (1830 x 1830 mm)

wedi Fundo® Primo® Shower Base



The original wedi Fundo® shower base. These robust, pre-sloped, waterproof shower floor bases come with a wedi Click and Seal™ drain unit. You can select one of our square wedi Premium drain cover options to fit the preferred design.

- Multiple base sizes and extensions available- all customizable on site if needed.
- Square and rectangular base options with center or off-center point drain locations.
- Slope design allows for use of small or large format tile when cut along slope lines.
- Installed over various types of subfloors.

1 BASE/CTN

Building Panel Underlayment Kit



Use when building electric floor warming systems. 100% Waterproof foam core acts as a heat insulator and thermal barrier.

1 KIT/CTN

UNDERLAYMENT KIT

Vendor Item #US4000002- Style #

- (5) wedi 2 ft. x4 ft. x 1/4 in. Building Panels (600 x 1200 x 6 mm)
- (1) wedi Joint Sealant, 10.5 oz. (310 ml)
- 40 tabless washers and wood screws





LINT TILE

111 NOTCH LANE WENDEL, PA 15691
P: 800-245-5564 F: 724-446-9252
www.linttile.com