



# **LINT TILE**

## **SIGMA TOOLS**

2024 - 2025 Edition



221 Lint Lane Irwin, PA 15642  
P: 800-245-5564 F: 724-446-9252  
[www.linttile.com](http://www.linttile.com)



# LINT TILE

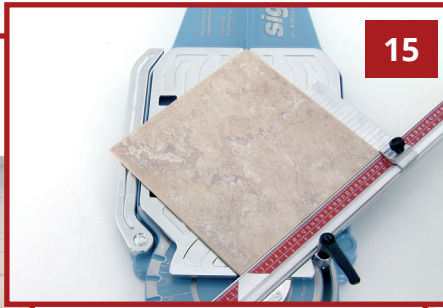


## OUR PARTNER

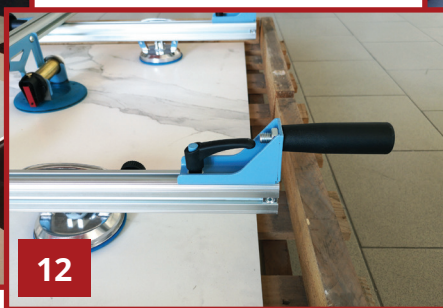
Sigma® specializes in the production of equipment for professional tilers and has done so since 1964. Changes in the tile making industry has kept the demand for quality tools and Sigma® has earned a solid reputation in the business. They carry out their design work internally and prototype through 3d automated programs before manufacturing. Production is implemented with codified manufacturing processes, with checks at all stages of the process. They guarantee finished products satisfy the highest standards of safety and strength always meeting compliance with the current European legislation.

***sigma***®

# Table of Contents



Work Benches.....	3-4
Kera-Cut System (Score and Guide).....	5-7
Kera-Flex System (Mount for Cutter).....	8
Edging Tools (Guides for Edges).....	9-10
Kera Lift System (Lift Large Format Tiles).....	11-13
Cutters.....	14-16
Installation Accessories.....	19



# WORK BENCHES

## ALUMINUM WORKBENCH

Vendor Item #63F - Stock Item #SI-TO WB

- Demountable & modular
- Suitable for working slabs
- light but sturdy
- Easily attach Cutting guide & clamps
- Supports fixing kits for special cuts

Demountable and modular workbench, particularly suitable as a support for working slabs and ceramic tiles. Thanks to its aluminum structure, light and sturdy, it guarantees an excellent support for large format tiles. At the workbench, you can easily attach various equipment, such as a Kera-Cut cutting guide, table fixing kit for simple bevel and jolly edge. Accessories like clamps for tile (item 400), hooks for support the Kera-Cut cutting guide (item 402), tile riser spacers to make transversal cuts with a diamond blade (art 409).

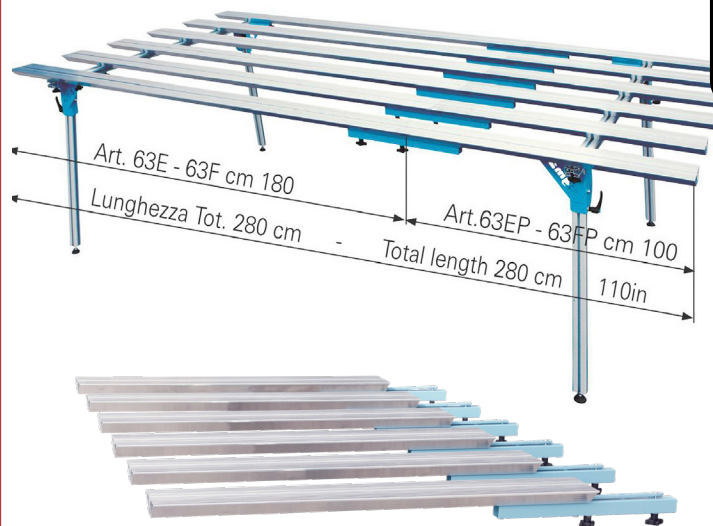


**sigma**

5 PIECES - 70" X 60" X 32"

## WORK BENCH EXTENSION

Vendor Item #63FP - Stock Item #SI-TO WB-EXT



- Easily position aluminum planks
- Empty areas for holes and pockets
- demountable & Modular
- supports fixing kits

Demountable and modular workbench, particularly suitable as a support for working slabs and ceramic tiles. Thanks to its aluminum structure, light and sturdy, it guarantees an excellent support for large format tiles. At the workbench, you can easily attach various equipment, such as a Kera-Cut cutting guide, table fixing kit for simple bevel and jolly edge. Accessories like clamps for tile (item 400), hooks for support the Kera-Cut cutting guide (item 402), tile riser spacers to make transversal cuts with a diamond blade (art 409).

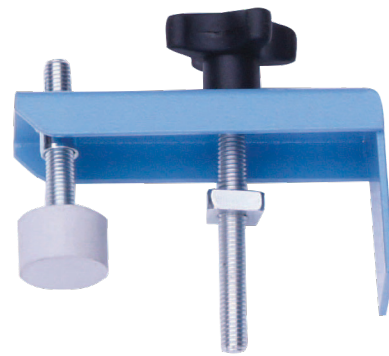
6 BARS 35"

## CLAMPS 2 PC KIT

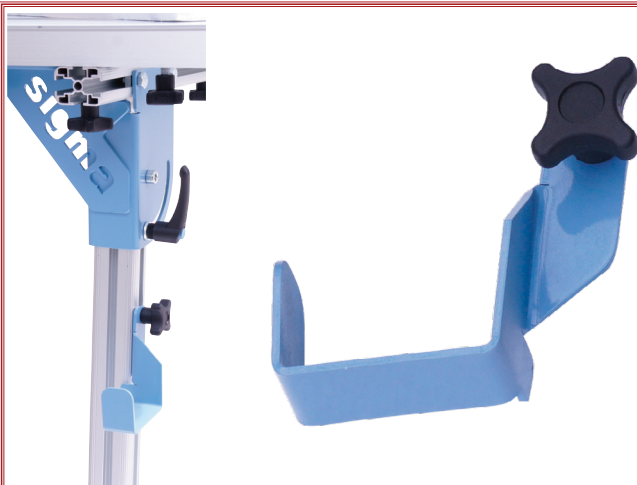
Vendor Item #400 - Stock Item #SI-TO CLAMP

- Easily attachable
- Made for the Work Bench

The clamps for the workbench are indispensable to fix the tile correctly during processing. Precision made to be easily attachable through the bars of the workbench.



KIT OF 2 CLAMPS



KIT OF 2 HOOKS

## HOOKS 2 PC KIT

Vendor Item #402 - Stock Item #SI-TO HOOK

*A Safe Place for Guides*

- Easily attachable
- Protects the cutting guide

The hooks for the workbench support and protect the Kera-Cut cutting guide from accidental impact.

## SPACERS

Vendor Item #409 - Stock Item #SI-TO SPACER

- Easily attachable
- Made for the Work Bench

The spacers raise the tile allowing cutting with the disk transverse without damaging the workbench. Not made to use while score cutting.



50 PIECE KIT

# KERA-CUT



## KERA CUT EXTENSION

Vendor Item #8AE2 - Stock Item #SI-TO KC-EXT



•Aluminum

•Accurate scoring



332 CM

Cutting equipment for large format tiles. The divisible aluminum guide, fixes on the tile by stain-free suction cups, allowing the carriage to slide with a scoring wheel. With the Kera Cut system, soft porcelain gris tiles with thickness 7mm and higher can be cut while using the breaker (#41D). Guides and accessories come in convenient storage cases. At 19mm thick and 480mm long, the hexagonal steel connection joint guarantees high rigidity and straightness of the assembled extruded profiles. Contains: 1 sliding carriage, 2 anti-stain suction cups, 2 extension rails, 1 nipper, 1 rotation support, and a canvas and accessories case.

## KERA CUT SUITCASE

Vendor Item #106734 - Stock Item #SI-TO CASE-SUIT

- Durable
- Transportable

Safely stores the Kera Cut System Accessories- 3 clamps, the sliding carriage and the breaker. See Page 5 for Kera Cut Extension Kit, sold separately.



FOR KERA CUT EXTENSIBLE VERSION



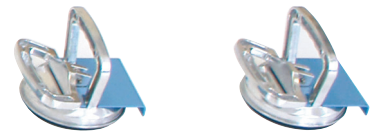
QUANTITY - 1

## KERA CUT SUCTION CUP

Vendor Item #51C2 - Stock Item #SI-TO KC-CUP

- Stain free Rubber
- Aluminum  $\varnothing$ 120mm

This strong locking aluminum suction cup is specifically built for rough materials. Capacity Max - 40kg.



## KERA CUT CANVAS CASE

Vendor Item #43K - Stock Item #SI-TO CASE-CANV

- Padded
- Made for Kera Cut System

Canvas padded case for the Kera Cut Guides (#8AE2).

Case for Kera Cut Guide Rails



CASE ONLY



## SEPARATOR

Vendor Item #41D - Stock Item #SI-TO SEP

- Separates tiles 7mm+
- For universal pre-scored tiles

Designed to aid in the separation of tiles with thickness greater than 7mm.



*Easily snap a tile along the score.*



KIT CONTAINS 1 SEPARATOR

## KERA CUT NIPPER

Vendor Item #41C - Stock Item #SI-TO NIP



Made for the Kera Cut System.

DESIGNED TO NIP 7MM TILES

## KERA CUT NYLON FOOT

Vendor Item #41C2 - Stock Item #SI-TO FOOT



Accessories for the Kera Cut System.

FOOT ONLY

## SCORING WHEEL

Vendor Item #14G - Stock Item #SI-TO SCO-14G



*Kera Cut Scoring Wheel*



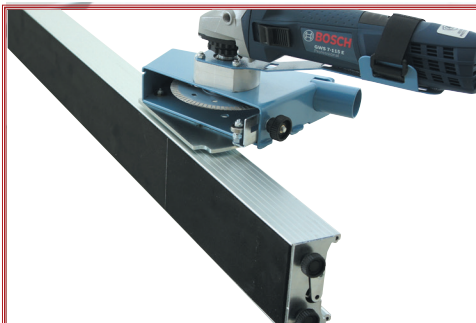
Ø13MM FOR KERA -CUT SYSTEM



# KERA-FLEX



Change the score carriage for a cutter carriage

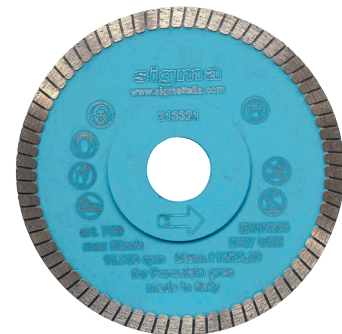


## KERA-FLEX EXTENSION/BLADE

Vendor Item #38F11PD - Stock Item #SI-TO KF-EXT

- Easily attachable
- Protects the cutting guide

This kit includes Sigma Kera-Flex mount and a #75B Diamond blade. Spindle thread- 5/8-11 UNC. Blade is  $\varnothing$  115mm hole 22.2mm, 1.3mm thick and designed for tiles from 5 to 25mm thick. Mount the Kera-Flex on the Kera-Cut guide to cut with a diamond blade up to 30mm thick. Convenient to adjust the depth stop.



CUTTER AND KERA CUT GUIDE NOT INCLUDED



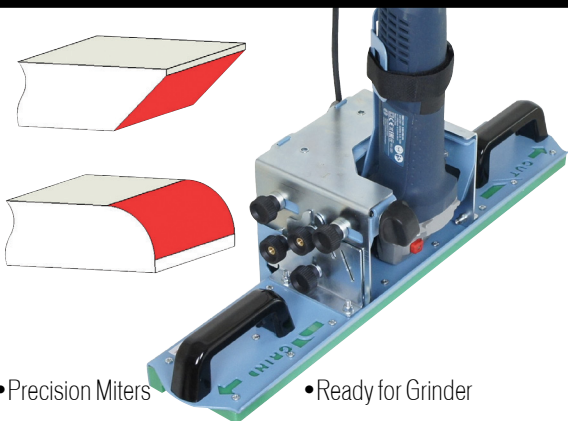
# EDGING TOOLS



*Pictured- Simple Beveling Machine*

## JOLLY-EDGE

Vendor Item #37A1PD - Stock Item #SI-TO JOLLY

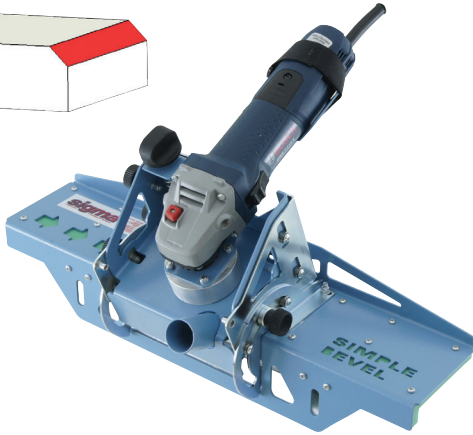
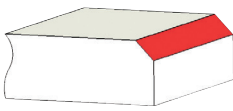


- Precision Miters
- Ready for Grinder

Sliding while resting on the edge of the tile / slab (stone-ware, marble, granite, etc.), ensures the uniformity of the miter along the entire length of the edge worked, copying exactly the physiological shapes of the slab. It can work in a single pass, tiles with thickness between 5 and 20mm and size from 30cm and up. In the configuration with diamond blade, it allows the mitering at any angle from 40° to 50°. Execute Bullnose edges with radius 6 - 8 - 10mm. Ready for grinder 700 - 1400W. Complete with blade disc that has a capacity max. of 5".



GRINDER OR CUTTER NOT INCLUDED



ADJUSTABLE 22° TO 90°

## BEVELLING MACHINE

Vendor Item #36A4DP - Stock Item #SI-TO BEV-MAC

- Finishes and Polishes
- Bevels and Bullnose

Precisions edges on porcelain, marble, granite or glass. Slide rests on the edge of the tile, ensuring uniformity of the bevel along the entire length of the worked edge, exactly following the physiological curves of the slab. Bevel from 0 to 12mm and from 0 to 6mm on porcelain gres. Adjustable from 22° to 90°. Bull is obtained with multiple passes at different angles. Finish with a lateral edge on a tile.

## TABLE FIXING KIT

Vendor Item #36C4 - Stock Item #SI-TO FIX-BEV

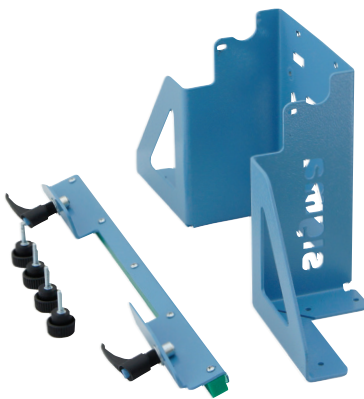
- Simple bevel machine accessory
- Aids in bevel skirting

Fix the simple bevel machine on a work bench for long narrow tile cuts, like skirting.



BEVEL MACHINE ACCESSORY

## Jolly Edge Accessory



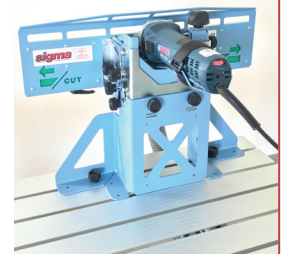
EDGE SKIRTING

## TABLE FIXING KIT

Vendor Item #37C - Stock Item #SI-TO FIX-EDGE

- Patented technology
- Accurate miter

Table fixing kit that aids the Jolly-Edge miter machine to do edge skirting.



# KERA-LIFT



## KERA-LIFT

Vendor Item #1A4 - Stock Item #SI-TO KL-6SUK

### ***Prevent Accidents!***

- Aids in lifting large tiles
- Demountable & modular
- Suitable for working slabs
- Light but sturdy
- Suction cups slide

Kera-Lift aluminum sliding guides with 6 suction cups will adapt to any shape of slab. Aids in lifting, handling and laying large tiles and panels. Suction cups slide along the profiles. 134" Max and 76" Min.



**sigma**

NO TOOLS NECESSARY TO MODIFY

# KERA LIFT-4

Vendor Item #ID2 - Stock Item #SI-TO KL-4SUK

## Guarantees up to 88lbs

- Aids in handling large tiles
- Transportable

Kera-Lift 4 includes 4 tilting suction cups and 2 fall protection safety clips. Aids in lifting and handling of large panels and tiles. Freely modify without the use of any other tool. Easily adapts to any shape. Suction cups slide along the profile. This kit can handle lengths between 195 and 340cm and panels that are between 20 -80 cm wide. Recommended weight limit is maximum 40kg.



HANDLE LARGE TILES WITH EASE



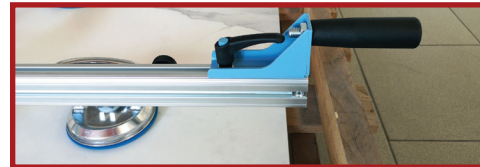
COMPATIBLE WITH OLD VERSIONS OF KERA-LIFT

# HANDLES KIT

Vendor Item #424 - Stock Item #SI-TO HANDLES

- Stain free Rubber
- Contains 2 handles

Aids in lifting slabs by inserting into the kera-lift slide.



# CARRIAGE KIT

Vendor Item #421 - Stock Item #SI-TO CARRIAGE

## Slide or Turn Tile on Long Carries

- Easy frame movement
- Run routes with curves

Carriage kit allows frame movement in an easy and safe way. The rotating wheel makes it possible to run route with curves. The trestles allow the perfect support of the slab even during the application of glue. There are two safe anti-fall brackets coated in rubber.



COMPATIBLE WITH NEW VERSION OF KERA-LIFT

## PUMP SUCTION CUP

Vendor Item #51P4 - Stock Item #SI-TO PUMP-SUC

**Capacity Max of 198 lbs**

- Excellent for rough material
- Aids in Handling and Lifting

ø150mm pump suction cup is excellent for rough materials. Has a capacity max of 90kg (45kg to CE rules).



DESIGNED FOR KERA-LIFT SYSTEM



Protection for 150mm Suction Cups. Aids in minimizing damage to the rubber.

DESIGNED FOR 150MM SUCTION CUPS

## SUCTION CUP PROTECTORS

Vendor Item #10518 - Stock Item #SI-TO PROT

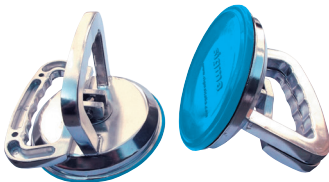


## LEVER SUCTION CUP

Vendor Item #51D2 - Stock Item #SI-TO LEV-SUC

- Strong locking
- Stain-free rubber

Aluminum Suction Cup, ø 120mm. Max capacity 40kg (10kg to CE rules). Mounts on Kera Lift can be used manually.



*Works on Textured Tiles*

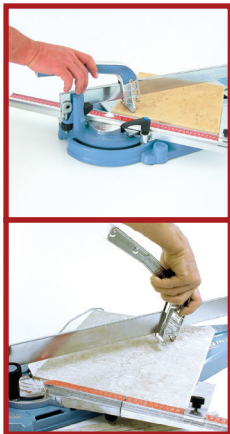


SPECIFIC FOR ROUGH MATERIALS

# CUTTERS



*Pictured- Sigma® 81 XL Series*



14" - 37CM

## SIGMA CUTTER 14IN

**Vendor Item #2G - Stock Item #SI-TO CUT-14**

- Pulling incision, fast and practical
- Ergonomic handle
- Patented technology
- 5yr Warranty

The Series 3 tile cutters have a quick change system of the incision handle that is ergonomic with ball bearings for fast pull and push. The chromed guides are robust for perfectly straight scores. The built in shock absorber silences your work. Height adjustable driver allows the cutter to handle various thicknesses of tiles. Measurement bar pivots at the center of the cutting line; swiveling +45° 0° -45°. Adjustable stop for quick positioning of metric bar to the angles most commonly used. Metric scale with side and diagonal measure. Long measuring square for use on right or left side. Closes up for transport. Swing arms open for larger tiles. Anti-slip rubber support feet. ø12mm scoring wheel.



## SIGMA CUTTER - 26

Vendor Item #3B4 - Stock Item #SI-TO CUT-26

- 5 yr warranty
- Quick Change System

The Series 3 tile cutters have a quick change system of the incision handle that is ergonomic with ball bearings for fast pull and push. The chromed guides are robust for perfectly straight scores. The built in shock absorber silences your work. Height adjustable driver allows the cutter to handle various thicknesses of tiles. Measurement bar pivots at the center of the cutting line; swiveling +45° 0° -45°. Adjustable stop for quick positioning of metric bar to the angles most commonly used. Metric scale with side and diagonal measure. Long measuring square for use on right or left side. Closes up for transport. Swing arms open for larger tiles. Anti-slip rubber support feet. ø12mm scoring wheel.



26" - 67CM

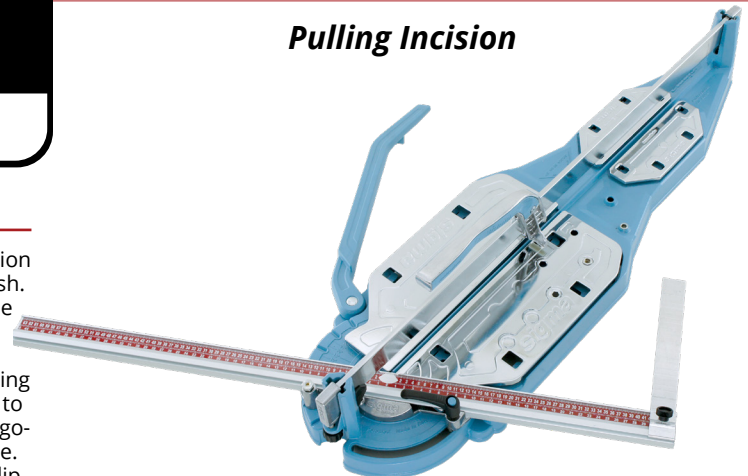
## SIGMA CUTTER - 37

Vendor Item #3D4 - Stock Item #SI-TO CUT-37

- Pulling incision, fast and practical
- 10mm Groove Handle

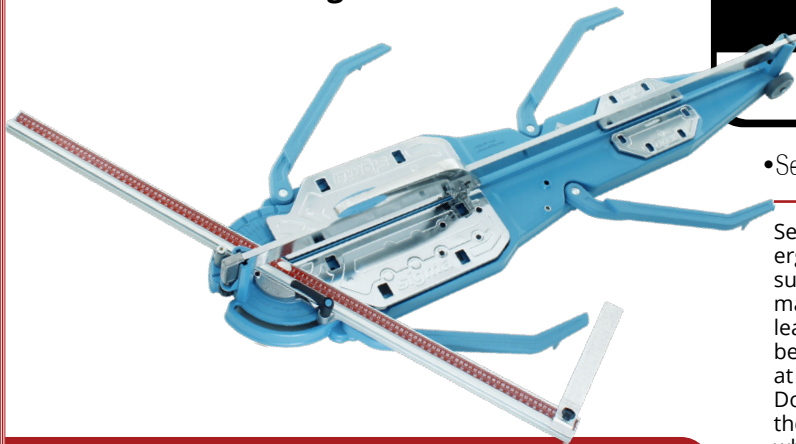
The Series 3 tile cutters have a quick change system of the incision handle that is ergonomic with ball bearings for fast pull and push. The chromed guides are robust for perfectly straight scores. The built in shock absorber silences your work. Height adjustable driver allows the cutter to handle various thicknesses of tiles. Measurement bar pivots at the center of the cutting line; swiveling +45° 0° -45°. Adjustable stop for quick positioning of metric bar to the angles most commonly used. Metric scale with side and diagonal measure. Long measuring square for use on right or left side. Closes up for transport. Swing arms open for larger tiles. Anti-slip rubber support feet. ø12mm scoring wheel.

### *Pulling Incision*



37" - 95CM

### *Pushing Incision*



51" - 127CM

## SIGMA CUTTER - 51

Vendor Item #3E4M - Stock Item #SI-TO CUT-51

- Series 3 Max
- 5 yr warranty

Series 3 Max has an easy and deep pushing incision and an ergonomic handle optimized for push cutting. The sliding surface of the wheel and guide bar are working with the tool machine for a straight incision. The grip slides on the guide lean on a ball bearing as the wheel rotates on a pond ball bearing. The aluminum alloy gap foot is light, rigid and wide at 100mm making it perfect to easily cut large format tiles. Double springs cushion the incision, which is essential for the working with rough or textured surfaces. ø19mm scoring wheel.



## SCORING WHEEL

Vendor Item #14M - Stock Item #SI-TO SCO-14M



ø12mm series 3 wheel for glass mosaics.

ø12MM

## SCORING WHEEL

Vendor Item #14A - Stock Item #SI-TO SCO-14A



ø12mm wheel specifically designed for Series 3 tile cutters.

ø12MM

## SIGMA CUTTER - 81

Vendor Item #12D1 - Stock Item #SI-TO CUT-81

- Series XL
- Transportable

The XL Tile Cutter has a frame and sliding guide made of light hardened alluminum alloy. The push handle provides cushioned scoring that runs completely on ball bearings and stainless steel runners. It's equipped with double measures for parallel cuts and pivoting support from +45° to -45°. With an ergonomic handle optimized for push cutting and double springs, the XL is optimal for rough and textured surfaces. The handle slides on steel rails that lays on 3 bearings with 6 ball rings. The foot gap is 100mm wide made to cut large format tiles. ø13mm scoring wheel. Handle- 100mm foot gap optimized for pushing.



81" - 205CM

## SCORING WHEEL

Vendor Item #14X - Stock Item #SI-TO SCO-14X



Series XL ø13mm scoring wheel.

ø13MM

## SCORING WHEEL

Vendor Item #14MX - Stock Item #SI-TO SCO-14MX



Series 3 Max ø19mm scoring wheel.

ø19MM



**Pushing Incision - "Nex"**

61" - 155CM- Ø16MM SCORING WHEEL

## SIGMA CUTTER - 4FN 61"

Vendor Item #4FN - Stock Item #SI-TO CUT-61

• 5 yr warranty

• 2024 Series

The Series 4 "Nex" tile cutters are pushing incision cutters made for easy deep cuts. The ergonomic handle is specifically designed for push scoring and has a 120mm splitting foot. It is coupled to the sliding carriage with two thrust ball bearings and has a double spring system for cushioned scoring on structured tiles. Scoring wheels last because they are guided laterally by an anti-friction metal shell inside a milled housing. Score without having to adjust for thickness. Measuring bar adjusts quickly on common angle stops. This model scores up to 61" horizontally, 43" vertically and up to 3/4" thick. #4FN has 4 support brackets for heavy tiles and an adjustable square that can be repositioned close to the cut.

## SIGMA CUTTER - 4EN 49"

Vendor Item #4EN - Stock Item #SI-TO CUT-49

• 5 yr warranty

• 2024 Series

The Series 4 "Nex" tile cutters are pushing incision cutters made for easy deep cuts. The ergonomic handle is specifically designed for push scoring and has a 120mm splitting foot. It is coupled to the sliding carriage with two thrust ball bearings and has a double spring system for cushioned scoring on structured tiles. Scoring wheels last because they are guided laterally by an anti-friction metal shell inside a milled housing. Score without having to adjust for thickness. Measuring bar adjusts quickly on common angle stops. This model scores up to 49" horizontally, 34" vertically and up to 3/4" thick. #4EN has 4 support brackets for heavy tiles and an adjustable square that can be repositioned close to the cut.

**Pushing Incision - "Nex"**



49" - 125CM- Ø16MM SCORING WHEEL

**Pushing Incision - "Nex"**



37" - 95CM- Ø16MM SCORING WHEEL

## SIGMA CUTTER - 4DN 37"

Vendor Item #4DN - Stock Item #SI-TO CUT-37

• 5 yr warranty

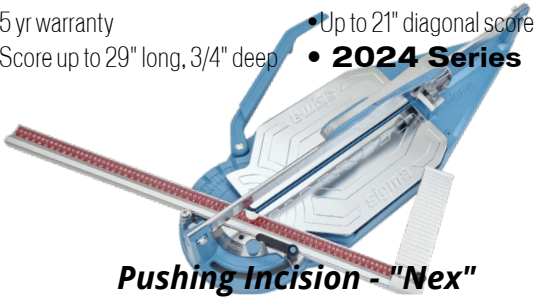
• 2024 Series

The Series 4 "Nex" tile cutters are pushing incision cutters made for easy deep cuts. The ergonomic handle is specifically designed for push scoring and has a 120mm splitting foot. It is coupled to the sliding carriage with two thrust ball bearings and has a double spring system for cushioned scoring on structured tiles. Scoring wheels last because they are guided laterally by an anti-friction metal shell inside a milled housing. Score without having to adjust for thickness. Measuring bar adjusts quickly on common angle stops. This model scores up to 37" horizontally, 26" vertically and up to 3/4" thick. #4DN has 2 support brackets for heavy tiles and an adjustable square that can be repositioned close to the cut.

## SIGMA CUTTER - 4CN 29"

Vendor Item #4CN - Stock Item #SI-TO CUT-29

- 5 yr warranty
- Score up to 29" long, 3/4" deep
- Up to 21" diagonal score
- **2024 Series**



*Pushing Incision - "Nex"*

29" - 76CM - Ø16MM SCORING WHEEL

## SIGMA CUTTER - 4BN 24"

Vendor Item #4BN - Stock Item #SI-TO CUT-24

- 5 yr warranty
- Score up to 24" long, 3/4" deep
- Up to 17" diagonal score
- **2024 Series**



*Pushing Incision - "Nex"*

24" - 62CM - Ø16MM SCORING WHEEL

## SIGMA CUTTER - 4DU 40"

Vendor Item #4DU - Stock Item #SI-TO CUT-40

- 5 yr warranty
- **2024 Series**

The Series 4 "UP" tile cutters are pulling incision cutters made for fast practical cuts. The ergonomic handle is specifically designed for pull scoring and has a 100mm splitting foot. The sliding carriage on the handle has three double crown ball bearings to ensure precision without maintenance. Scoring wheels last because they are guided laterally by an anti-friction metal shell inside a milled housing. Automatic system holds the handle raised so positioning the tile is easy. Measuring bar adjusts quickly on common angle stops. This model scores up to 40" horizontally, 28" vertically and up to 2/3" thick. #4DU has 2 support brackets for heavy tiles and an adjustable square that can be repositioned close to the cut.



*Pulling Incision - "UP"*

40" - 103CM - Ø12MM SCORING WHEEL

## SIGMA CUTTER - 4CU 33"

Vendor Item #4CU - Stock Item #SI-TO CUT-33

*Pulling Incision - "UP"*

- 5 yr warranty
- Score up to 33" long, 2/3" deep
- Up to 23" diagonal score
- **2024 Series**



33" - 84CM - Ø12MM SCORING WHEEL

## SIGMA CUTTER - 4BU 27"

Vendor Item #4BU - Stock Item #SI-TO CUT-27

*Pulling Incision - "UP"*

- 5 yr warranty
- Score up to 27" long, 2/3" deep
- Up to 19" diagonal score
- **2024 Series**



27" - 70CM - Ø12MM SCORING WHEEL

# INSTALLATION



16X33CM

## TROWEL BEAT TILE

Vendor Item #42E - Stock Item #SI-TO TROWEL

- Durable
- Stain-free

Manually hammer the tile using Sigma's beat trowel to ensure complete discharge of air, starting from the center working towards the sides in the same direction of the thinset.



## MOVE SUCTION CUPS

Vendor Item #51G - Stock Item #SI-TO MOV-CUP

- Rough and large format tiles
- Stain free

The MOVE suction cups is indispensable for the correct approach of large format tiles. The four strong stain-free suction cups adheres to any rough tile.

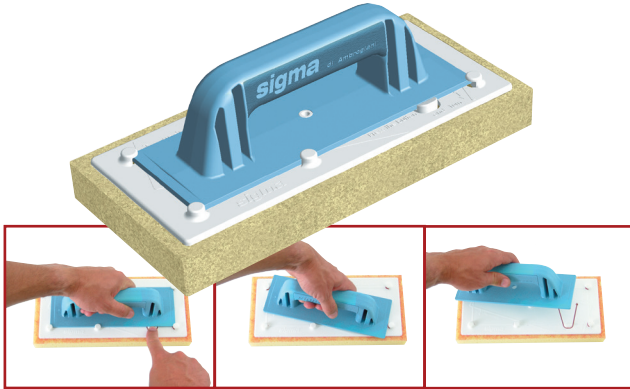


DESIGNED TO HANDLE ROUGH TILE

# ACCESSORIES

## FLOAT & SPONGE

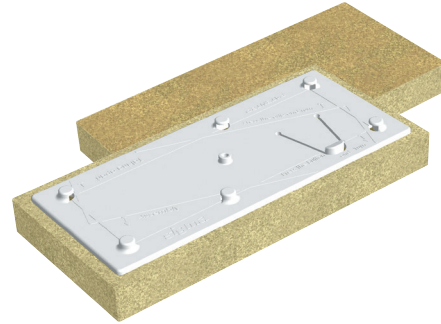
Vendor Item #48L7 - Stock Item #SI-TO SPO-HAND



RELEASE WITH ONE FINGER

## SPONGE FOR FLOAT

Vendor Item #48L7R - Stock Item #SI-TO SPONGE



High Absorption Sponge made for quick disassembly.

30X14X3CM

## WASHING TUB KIT

Vendor Item #47M8 - Stock Item #SI-TO TUB



Kit includes Washing tub, 2 rollers, bucket wheels and sponge float.

2 ROLLERS, TUB, WHEELS & FLOAT

## WRINGING ROLLER W/ PIN

Vendor Item #100534 - Stock Item #SI-TO ROLL



Drilled wringing roller with integral pin for #47M8 Washing tub.

MADE FOR WASHING TUB



***LINT TILE***

221 Lint Lane Irwin, PA 15642  
P: 800-245-5564 F: 724-446-9252  
[www.linttile.com](http://www.linttile.com)